

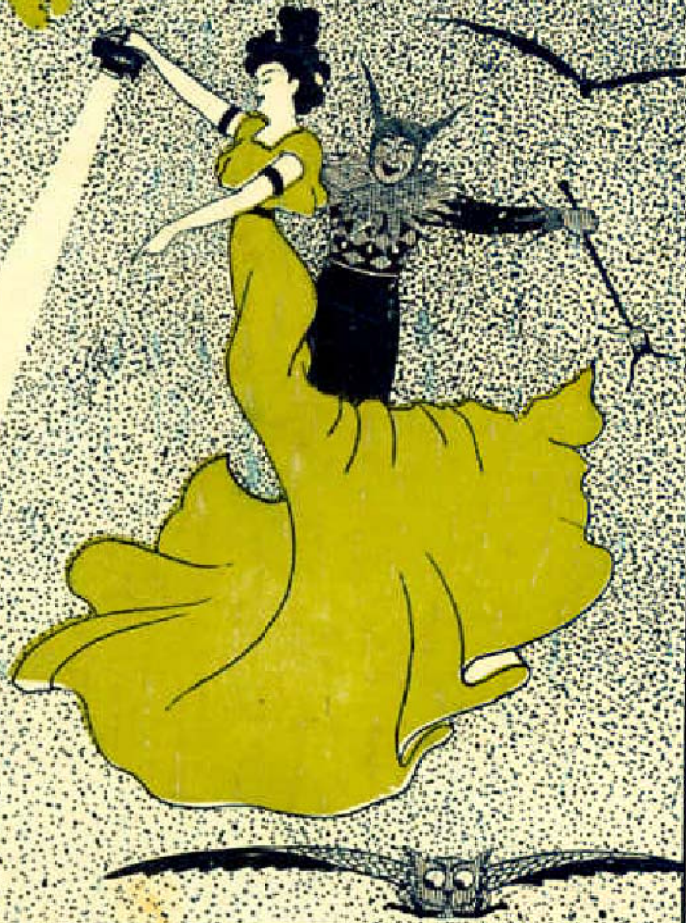
The
Searchlight.

PRESS

*Sun
PRINTING Co.*

FULTON, MO.

THE SEARCHLIGHT



Westminster • and • Synodical
•• Colleges. ••

SYD. PRENTICE,

Introduction and Dedication.

PERHAPS it is not fitting to apologize for putting ones best foot forward, but the small resources at hand and the hasty preparation of the SEARCHLIGHT, makes it necessary that an apology be made that the book cannot more worthily represent the causes it has espoused. The hackneyed expression "Rome was not built in a day" portrays the thought that her granduer was the work of days, months, years, centuries.

The SEARCHLIGHT is the work of three weeks, not of concentrated co-operation but, almost, single handed plodding. An earnest endeavor has been made to collect material that would recall pleasant memories in future years. Any defect in the SEARCHLIGHT in being the mirror of college life is due to the lack of *quick silver*, however, herein given are the forms and features of the Seniors, with all their dignity; the Sororities with all their beauty; the Fraternal Orders with their mysteries of ghosts and goats; the Literary Societies, with all their oratory; the *Collegian* Staffs, composed of novice quill shovers; and other clubs and organizations known to College life.

The SEARCHLIGHT is respectfully and lovingly dedicated to the graduating classes of Westminster College, for young men, and Synodical College, for young ladies—respectfully to the young men, lovingly to the young ladies.

In future years, when Father Time shall have laid his hand either gently or heavily upon you who are just entering the outer world for a name and fame, may these words given you through the SEARCHLIGHT still be your motto:

"Do noble things, not dream them all day long;
Thus making life death, and that vast forever,
One grand, sweet song!"







John F. Bolton.

Harland C. Hurd.

Harry W. Houf.

James B. Jones, Jr.

Lyman Steed.

Lynn F. Ross.

William C. Swope.

Frederick Hausstein.

Graduating Class of Westminster, 1900.

Class of 1900.

Officers.

JAMES BEVERLY JONES, President. HARLAND CORWIN HURD, Vice-Pres.
FREDERICK HAUENSTEIN, Sec'y, and Treas. WILLIAM CHRISMAN SWOPE, Historian.
LYNN FRANCISCO ROSS, JOHN FREDERICK BOLTON, LYMAN STEED,
HARRY WALTER HOUF.

History of '00.

'00, GENTLE reader, might stand for "goose eggs" to the number of two, but it happens not to be in this particular case. "He that bloweth not his own horn, then verily I say the same shall not be blown." Perchance were the historian of an egotistic nature, for he feels a justifiable pride in his class, it would give him bounteous pleasure to enumerate "ALL" the honors credited to this remarkable class, since entering college, but space forbids. However, for a few. Many are the medals, such as the Scholarship and Declamatory, captured by our class men. The *Collegian* sought our ranks for assistance. All kind of offices in the Literary Societies received our able services. In fact, all that betokens an h-onorary aggregation are with us. For further truth and verification apply to the valedictorian.

'Tis sad to lament that the Freshman Class of '97 could not all survive. For had it been true, perhaps we of '00 would have had knowledge of belonging to the largest as well as one of the strongest classes that ever obtained "sheep skins" of Westminster College. However, there is Moore, the soldier; McChesney, the professor; Stokes, the banker; Lyons, the farmer; Cousley, the capitalist; and McMurtry, who is still at his old game—chasing college maidens—all doing us honor outside the school.

Onward! Onward! Oh, but 'twas hard work. We have at last reached the pinnacle to the half-way meridian of life. And how patiently too, the dear professors have borne our many faults. Our efforts for success we hope and trust shall not be in vain. For we launch forth, to the world; a genius who will startle the electrical world; an Esculapius of the future; an Aristotle of the nineteenth century; an agriculturist whose theories will live long and astonish generations to come. And yet this is not all. Lift your hat to the journalist of fame; sing praises to the theologian, and when the people of literature welcome a new historian and the commentaries of Blackstone are recognized no more, then will our work be ended. Great is the class of 1900!



Marian Watson. Orlou Hume. Merle Howe. Edna Sartor. President Walton. Ailie Standefer.
 Jane Curd. Hattie Houf. Ethel Morrison. Anna Kirkpatrick. Edith Clagett. Miss Killough. Fannie Watson. Sadie Leavell. Evelyn Humphreys. Esther Henderson.
Graduating Class of Synodical College, 1900.
 Agnes Harrison. Grace Herckenrath.

Class of 1900.

Officers.

Agnes W. Harrison, President, Sara A. Leavell, Vice-President.
Evelyn Humphreys, Secretary. Merle Howe, Treasurer.
Grace C. Herckenrath, Historian.

Edith Clagett, Anna Kirkpatrick,
Jane T. Curd, Ethel Morrison,
Esther F. Henderson, Edna Sartor,
Harriet E. Houf, Allie Standefer,
Orlon Hume, Marian Watson,
Frances Watson.

IT has been said that "Happy individuals, like happy nations, have no history," we hope that this is not altogether true, for, as the class of 1900 has been a happy one, it would grieve us to think that we have done no deeds that will bear recording. Carlyle says, "In a certain sense all men are historians." Although Carlyle was a Great scholar he certainly was mistaken about some things.

Before we "Noughty Noughts" reached our Senior year we had time to reflect and decided that "Life is real, life is earnest." We found that very little real work is done at a dash. The crowning achievement, the "getting there", has been by slow, careful, persistent steps. So the Senior, though she appreciates her vantage ground after so long a toil, remembers that "every sweet has its sour."

Though now we number "sweet sixteen", we have not undergone servitude from the Preparatory Department to our graduation in a College; for many of us left High Schools to enjoy the advantages of College life. As Freshmen the sight of a Senior fairly chilled us. We then thought that should we ever attain that height, their dignity would be ours. Alas! Some are doomed to disappointment. Scarcely had we begun our journey until we came across unknown quantities, which of course were found out,

but there was a radical change when we came to "Pons Assinorum." It was during the Sophomore year that the Bible Commentary disappeared for weeks at a time much to the sorrow of the teacher and the class. Now, "Do not think that years leave us and find us the same."

Junior Year stands on nineteen hundred's record as a "Monument more lasting than brass," but "Monuments themselves memorials need." You remember Agnes W. Harrison won the Junior Scholarship for the year '99 and "Great was the glory, for the strife was hard." The Bible Medal was awarded to Merle Melville Howe, and Jane T. Curd was awarded the Marquess Music Medal in '98. Though many honors for several years have been ours, the remainder of our class think truly that "the paths of glory lead but to the grave." You know we always bow to fate, but not as a matter of courtesy.

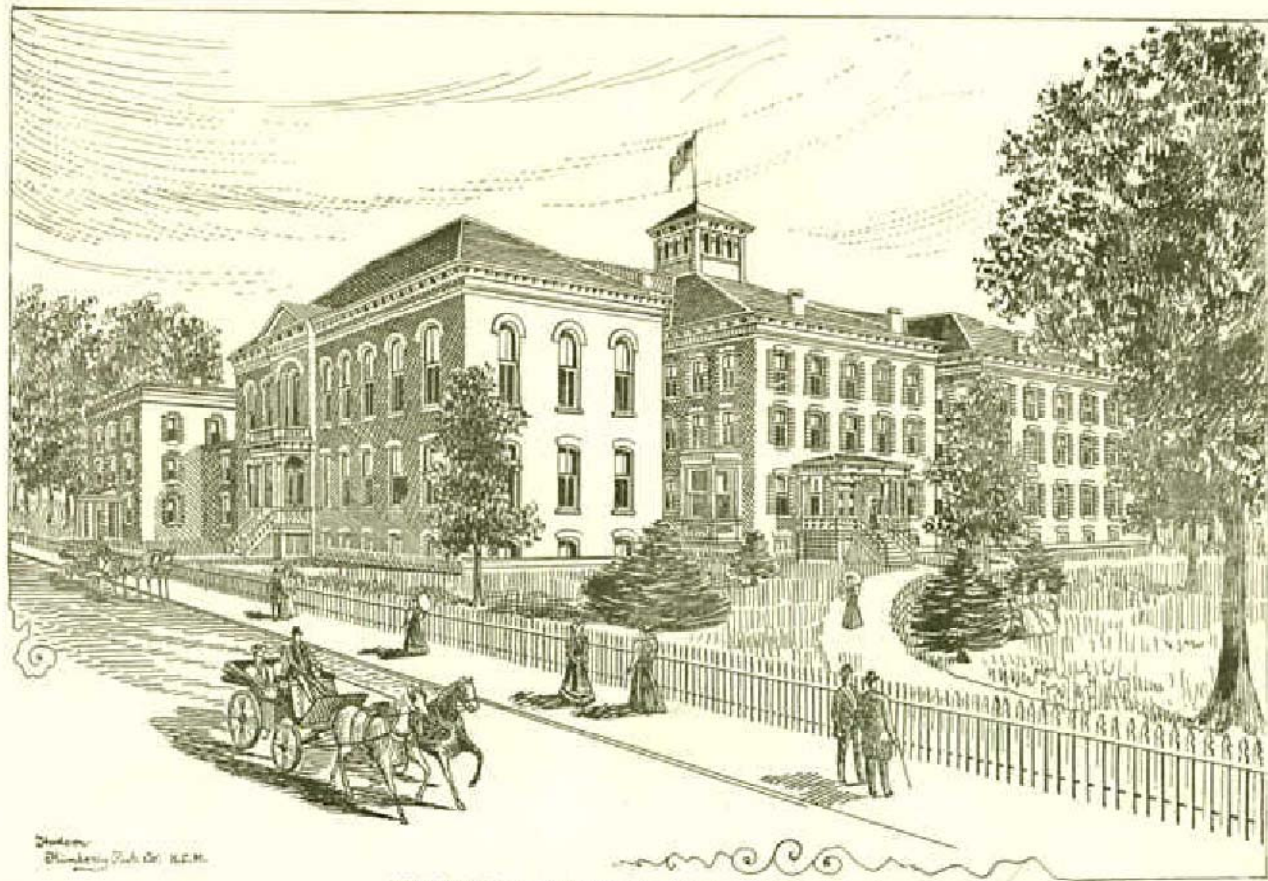
Now we have reached Senior year. "Perhaps it will turn out a song, perhaps a sermon." We are told that "dignity increases more easily than it begins," so may it be, and may added responsibilities and duties bring their proportionate dignity to preserve the reputation of 1900.

"Everything that has a beginning comes to an end," says Quantilian, so the "long and the short" of all this is that ere long we will leave these classic halls. Suffice it to say that under the instruction of our worthy President, Mr. T. P. Walton, we have learned that "every why has its wherefore" and as for Logic. "No 'tis not so deep as a well, nor so wide as a church door, but 'tis enough."

This is our history from our view, but we are aware of the fact that there are two sides to every question, so for any further facts desired our records at Synodical will show.

"Farewell old College, we bid thee adieu;
The ties that have bound us must sever,
With a tear in our eye and a sigh in our heart,
We bid thee a farewell forever."





Shelton
Pittsburg, Feb. 25, 1858.

PROPOSED NEW BUILDING OF S. F. C.

The Synodical Female College.

The Synod of Missouri, in session at Cape Girardeau, October 10, 1871, located at Fulton, Missouri, a College for the higher education of young women, giving to it the above title. The College secured its Charter and the Board of Trustees named by the Synod was made a corporate body in December, 1871.

The Board of Trustees consists of nine members in three divisions. Each division serves six years, and is then filled by the Synod. Any vacancies in the Board, occurring by death or otherwise, are filled by the Synod as they occur.

The Board makes an annual report to the Synod, and the Synod at each annual meeting appoints a Visiting Committee, whose duties are to visit the College during the session and make report to the Synod. This Committee consists of one member from each of the Presbyteries.

S. F. C. is located in Fulton, one of the oldest towns in the State, and celebrated far and near as the seat of refinement, culture, and hospitality. Few cities of the State, of the same size, equal, and perhaps none surpass, Fulton in morality and the high character of its community. The College is situated in a delightful part of the city. The situation is retired, although very accessible. The grounds are large, affording ample opportunity for exercise, which is so essential to pupils in a boarding school. A number of excellent walks are near by, and upon one of these the pupils are required to exercise daily.

A recent paper says: "There is not in the land a more interesting sight than the woman's college, nor is there a pleasanter sign of the times than the thoroughness with which our girls are to-day prepared for the multiform duties and the opening fields of occupation which life will present to them. Few elderly women, appreciating the advantages our girls enjoy, can help a retrospective glance of almost envy when they see what opportunities for discipline and mental culture the girls of to-day have as compared with their predecessors." Perhaps there is not an institution in the land where more care is taken to thoroughly educate its students than our own Synodical College. Every effort is made, every opportunity embraced, to develop all the best traits of every girl's disposition. Send your daughter to Synodical. We hope that the contemplated addition to the buildings will soon be made. We present a cut of the proposed new building on another page.



REV. T. P. WALTON.
President of Synodical College and Conservatory
of Music.



DR. J. H. MACCRACKEN,
President of Westminster College

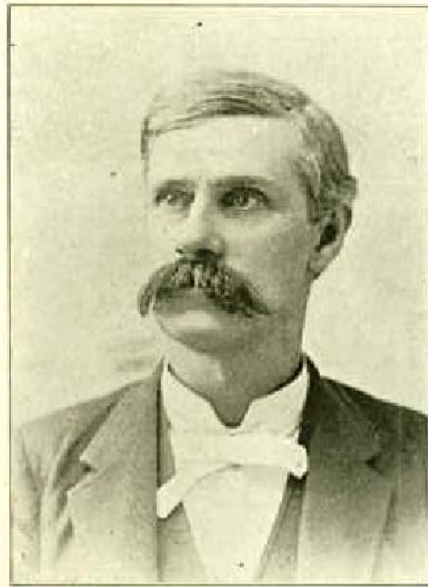
Westminster Faculty.



JOHN F. COWAN, A. M., D. D.



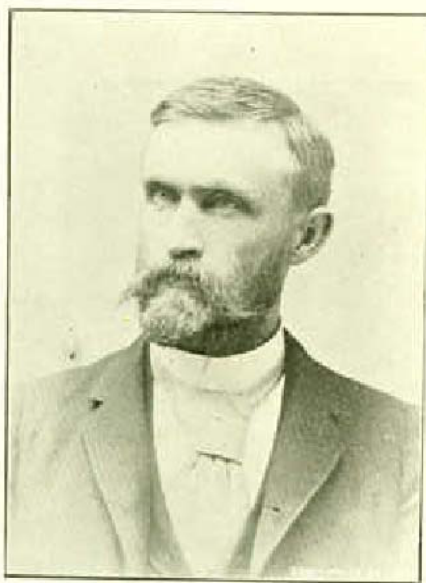
WILLIAM J. WRIGHT, D. D., LL. D.
(Resigned.)



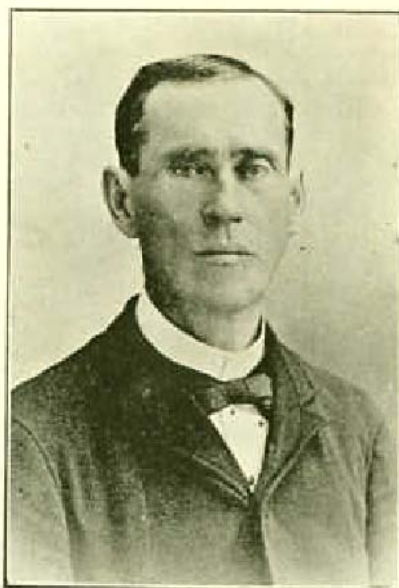
EDGAR HODGE MARQUESS, A. M.



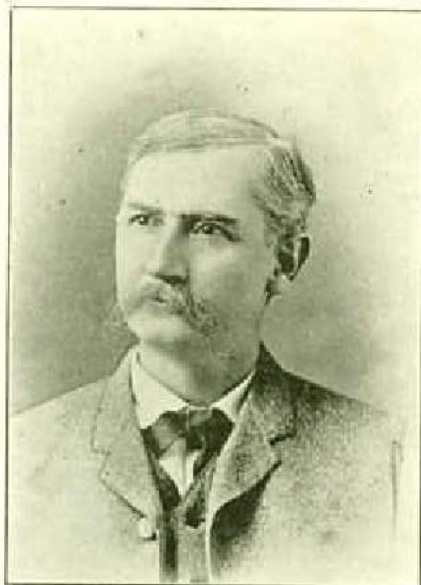
L. L. CAMPBELL, M. A., Ph. D.



DANIEL S. GAGE, A. M.



JOHN H. SCOTT, A. M., Ph. D.



JOHN. J. RICE, A. M., LL. D.



EDWARD S. WOOD, A. M.



Westminster Mandolin and Glee Club.

Westminster Mandolin and Glee Club.

MOTTO: "Always b natural, never b flat, sometimes b sharp."

MUSIC hath charms to soothe the savage breast" accounts for the good appearance of the physiognomies on the opposite page. In ancient times the great Orpheus moved rocks, trees, and inanimate things by strains of music which flowed from the lyre under his skillful touch, but Orpheus would look like thirty cents in a mud hole in comparison with the Westminster Mandolin and Glee Club.

When we went forth to "waste our sweetness on the desert air" just as the moon was shedding its gentle rays through the green trees then was the honor of Orpheus shaken. Not only did we move rocks, clubs, shoes, eggs, and water pitchers-but finally ourselves. Our last *run* was made Prestissimo. On one occasion when we appeared in public, our playing *moved* the house. The audience threw it at us, brick at a time. Verily do we believe, that "it is better to give than to receive."

In all sincerity the Mandolin and Glee Club is one of the most enjoyable features of College life. Every true College man has a deep appreciation for music.

"The man that hath not music in himself,
And is not mov'd with concord of sweet sounds,
Is fit for treason, stratagems, and spoils--
Let no man trust him."

Mandolin Club.

First Mandolins.

J. Fred Bolton, J. William Schott,
Edwin Tucker, Geo. Buhn.

Second Mandolins.

J. Brent Williams, Walter Gregory Bryan,
E. C. Knox, Wheeler B. Adams.

GUITARS.

Stanley E Adams. Logan Guthrie. Joseph Bryan. Duncan McGregor.
Lyman Steed, Piano N. C. Whaley, Banjo.

Glee Club.

Geo. Buhn, Baritone. Duncan McGregor, First Tenor. Logan Guthrie, Second Tenor.
Nathaniel C. Whaley, Bass.



Westminster Collegian Staff.

Albert S. Berghauer, Asst. Editor. J. B. Jones, Jr., Fraternity. L. M. White, Asst. Bus. Mgr.
W. G. Bryan, Editor in Chief and Bus. Mgr. Lyman Steed, Asst. Editor. N. C. Whaley, Exchange.
Hal Hill, Asst. Bus. Mgr. A. B. Caruthers, Athletic

The Westminster-Synodical Collegian.



Grace Patton, Local.

Agnes Harrison, Literary.

Eather Henderson, Exchange.

Synodical Collegian Staff.

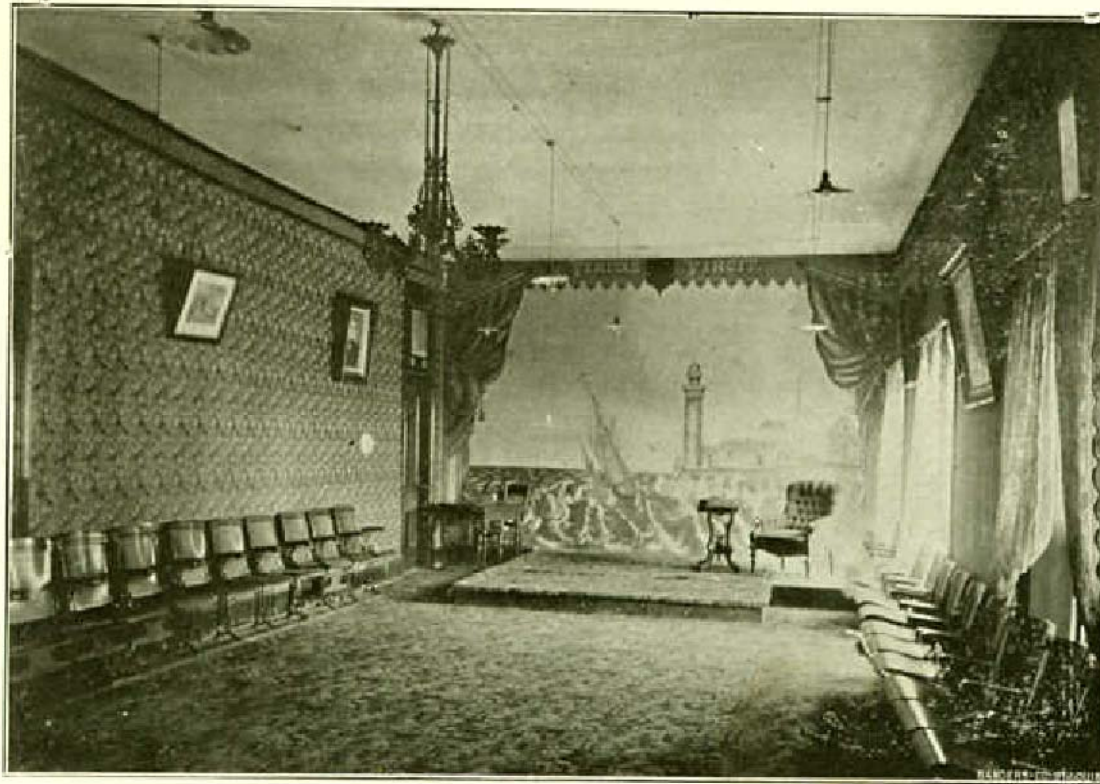
tisers have gotten good results from their ads then the COLLEGIAN staffs feel that their labor has not been in vain.

THE publishing of the COLLEGIAN this year was an experiment. From time to time since the two colleges were organized some paper has been published in their interest, either separately or together. These publications have met with various experiences and the financial agents have generally given testimony that "experience is a dear teacher." The paper was undertaken by its present management, believing in the motto of Napoleon that "in the dictionary of every sensible man there is no such word as can't", and by persistent effort has been able to hold its own during the Collegiate year. On each issue more money and labor has been expended than was originally contracted for. If the colleges for which the paper is published have been benefitted, if the student body of the two institutions have appreciated that they receive all, and more too, than was promised, and if the adver-



Members Philaethian Society 1899-1900.

J. F. Bolton, J. K. Black, C. E. Cowherd, H. C. Hurd, H. W. Houf, C. C. Shavor, S. O. Sanderson, H. F. Falt,
R. M. Robinson, T. H. Ebersole, R. S. Branch, Irvine G. Mitchell, J. Sanderson, W. H. Walthall,
G. M. Robinson, Roy Mertz, F. O. Mahoney, D. H. Hope.

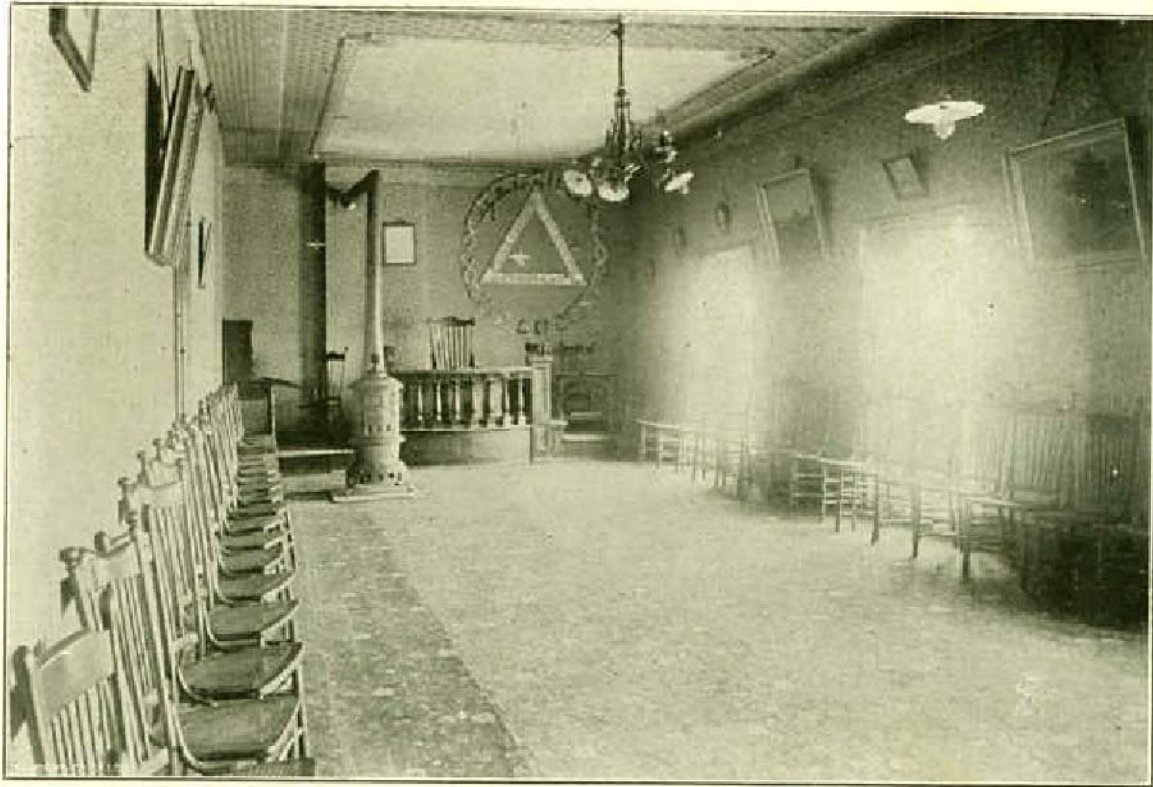


Philalethian Literary Society Hall---Officers '00.

H. C. Hurd, President. R. M. Robinson, Vice-President. C. C. Shaver, Secretary. J. K. Black, Censor. I. G. Mitchell, 1st Critic.
J. F. Bolton, 2nd Critic. W. E. McMillin, Treasurer. R. S. Branch, Librarian. H. F. Falt, Sergeant-at-arms.



Members of Philologic Literary Society 1899-1900.



PHILOLOGIC SOCIETY HALL—MEMBERS 1899—1900.

Boale, A. L. Byrnis, O. L. Bell, O. Bryan, W. G. Conway, W. Q. Divers, B. C. Dryden, F. Jones, J. B. Livingston, H. R. Steyer, J. L.
 McCall, C. F. Peters, R. E. Ross, L. F. Tyler, L. Yates, M. Holt, W. C. Collett, C. C. Robinson, W. M. Pratt, J. R.
 Shiffer, H. C. Reavis, W. R. Whaley, N. C. Burch, R. E. Hale, H. M. Egbert, J. J. Caruthers, A. B.
 Lewis, J. W. White, R. M. Payne, W. G. Noland, H. H. Fletcher, W. C. Thomas, H.
 Summers, G. R. Drake, E. T. Lydes, J. C. Nichols, F. J.



Y. M. C. H. Cabinet.

Y. M. C. A.

IN 1877 the Young Mens Christian Association with H. C. Evans as its first president, entered upon its mission at Westminster College. The aim of the organization has been: First, to guard and develop Christian students for Christ; second, to bring unconverted students to Christ; third, to send our students to work for Christ.

This year our association was represented at the Springfield State Y. M. C. A. Convention by Messrs John W. Lewis and Lyman Steed. During the year we have enjoyed visits from three secretaries of the Y. M. C. A. work: Mr. H. W. Rose of the International Committee, Mr. H. J. McCreary State Secretary of Michigan, and our own State Secretary, Mr. I. E. Munger.

Three receptions have been given to the students during the school year. The former debt to the State Work is a thing of the past and we expect to have two representatives at the Geneva Conference held June 15-24 at Lake Geneva, Wisconsin.

Gospel meetings have been held every Sunday afternoon at the College where the members learn to lead in prayer, conduct meetings, and are otherwise trained in Christian work.

A large reading room, which also serves as a study hall, is open to the members on the third floor of the College building. There are found all the latest periodicals and daily papers.

The work this year has progressed nicely and through its work many are gradually induced to devote their life work to Christ.

Officers.

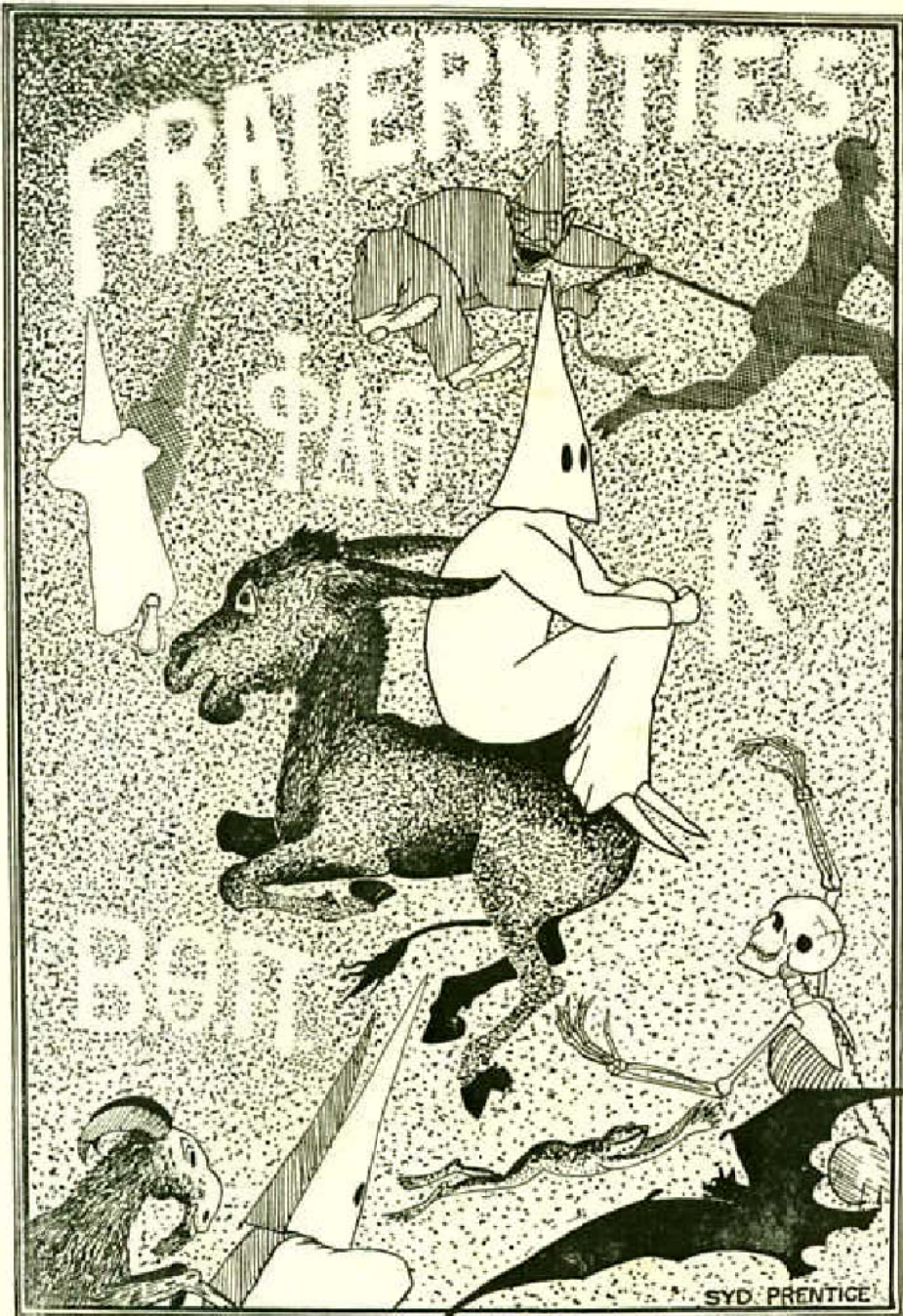
- | | |
|---|---------------------------------------|
| 1 John W. Lewis, President. | 3 O. L. Byrns, Vice-President. |
| 5 E. Drake, Recording Secretary. | 2 R. Branch, Corresponding Secretary. |
| 7 W. R. Reavis, Treasurer. | |
| 4 L. F. Ross, Chair. Bible Study Com. | 8 Rollie Peters, Chair. Finance Com. |
| 6 Lyman Steed, Chair. Prayer meeting Com. | |

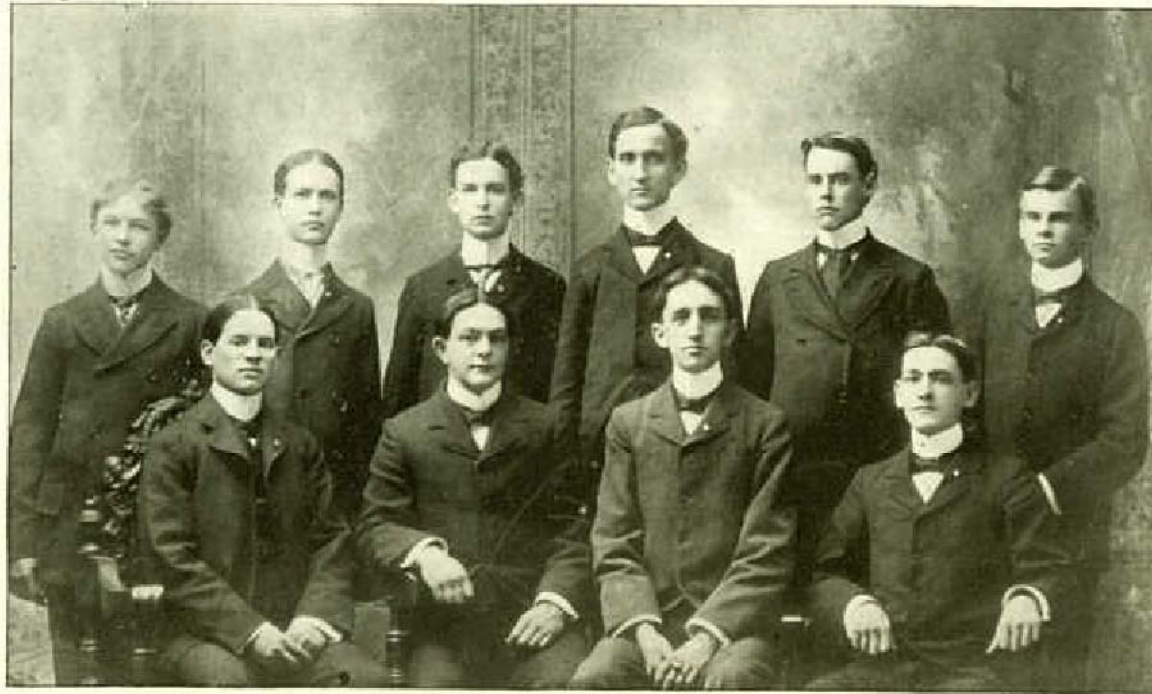




R. E. King. F. Baker. G. Baker. J. K. Black. H. Hill. W. H. Walthall.
 E. R. Byrd. D. H. Hops. C. S. Dunlap. J. McIntire. B. C. Divers. W. Q. Conway
 W. Baker. Captain. A. B. Caruthers. H. F. Falt. L. M. White. H. Noland.

Westminster Foot Ball Team 1899.





Alpha Delta Chapter Beta Theta Pi.

F. Elmo Baker,	Wm. Schott,	J. Fred Bolton,	Lynn F. Ross,	Halbert R. Hill,	Walter F. McMillan,
Geo. R. Summers,		James J. Egbert,	J. B. Jones, Jr.,		John Lewis.

Fratres in Urbe.

E. T. Scott, M. D.,	D. H. Young, M. D.,	M. Yates, M.D.,	E. W. Grant,	E. J. Grant,	R. B. T. Oliver,	W. F. Russell,
		J. R. Baker,	F. Elmo Baker,	A. R. Henderson.		

Beta Theta Pi Chapter Roll.

Founded at Miami University in 1839.

List of Active Chapters.

Miami University	Bethany College	Union College
Western Reserve University	Iowa State University	Columbia College
Ohio University	Wittenburg College	Amherst College
Centre College	Westminster College	Vanderbilt University
Washington and Jefferson College	Iowa Wesleyan University	Ohio State University
Harvard University	Denison College	University of Texas
DePauw University	Richmond College	University of Nebraska
Indiana University	University of Wooster	Pennsylvania State College
University of Michigan	University of Kansas	Denver University
Wabash College	University of Wisconsin	Syracuse University
Brown University	Northwestern University	Dartmouth College
Hampden-Sidney College	Dickinson College	Wesleyan College
University of Virginia	Cornell University	Rutgers College
University of North Carolina	Boston University	Lehigh University
Ohio Wesleyan University	Steven's Institute of Technology	Cincinnati University
Hanover College	St. Lawrence University	Kenyon College
Cumberland University	Johns Hopkins University	Minnesota University
Knox College	University of California	Missouri University
Davidson College	Maine State College	University of Chicago
Beloit College	Colgate University	University of Mississippi
Leland Stanford, Jr., University		California University

We are glad to note that the following Betas have been prominent in the College history of the current year: Frank W. Sneed, D. D., '88, Baccalaureate Sermon; Walter F. McMillan, first place in Oratorical Contest; James B. Jones, second place in Oratorical Contest; Geo. R. Summers, second place in Declamatory Contest; Lynn F. Ross, Valedictorian.



E. T. Drake. H. W. Thomas. S. R. Branch. E. L. Whitney. A. Moore. R. E. King.
N. C. Whaley. L. Steed. C. C. Collett. W. H. Walthall. H. M. Hale. G. A. Shaefer.

Kappa Alpha.

Kappa Alpha.

The present order of Kappa Alpha was founded at Washington & Lee University, Lexington, Va., in December, 1865, by J. M. Wood, W. N. Scott, S. M. Scott, W. A. Walsh and R. S. Thompson. Founded on Southern soil and embodying the principles of Southern chivalry, its aim has been to cultivate the manliest virtues and graces. Its Chapters live in fifteen States and its "bond" unites fratres from California to Maryland.

The badge is a shield displaying an eight-pointed cross set in a circle of black enamel—above it the letters K. A. The flowers of the order are the Magnolia and the Red Rose; colors Crimson and Gold.

Alpha Eta, the thirty-first chapter of K. A., was established at Westminster on February 5, 1890. The roll has steadily increased, until now, it numbers seventy-five wearers of the shield and cross.

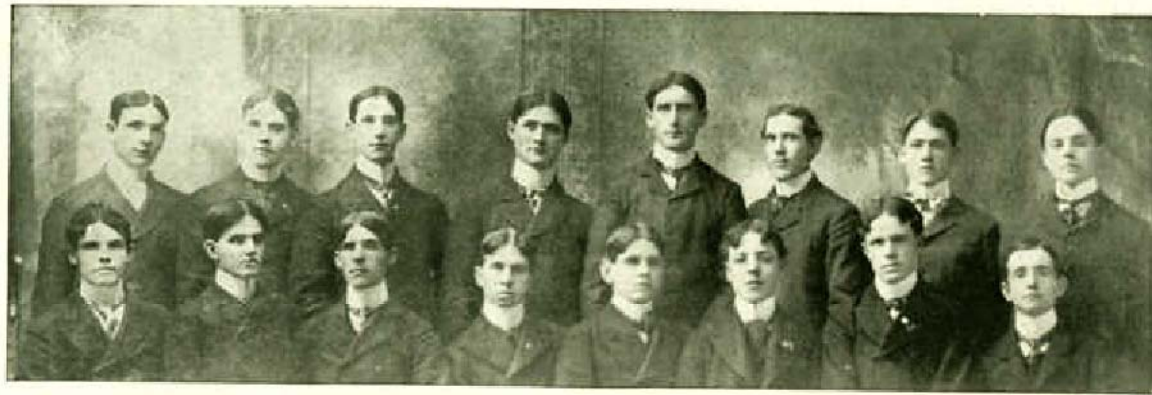
Hooray! K. A. Hooray! K. A.
Rah! Rah! Rah!
Kappa Alpha!
Alpha Eta Chapter!
Rah! Rah! Rah!

Fratres in Urbe.

Roy Alfred Moore,
Augustus Hockaday, '90, Edward Howard Payne,
Rev. Archibald Alexander McGeachy, Sigma '91.

Fratres in Collegio.

Lyman Steed,	Raymond Sidney Branch,
Harry W. Thomas,	Charles Cope Collett,
Erwin Lionel Whitney.	Ewell Travis Drake,
Wm. Henderson Walthall,	Holly Morgan Hale,
Herbert Roy Livingston,	Robert Edward King,
Nathaniel Calvin Whaley.	Gustavus Adolphus Shaefer.



E. R. Byrd, E. C. Knox, J. K. Black, R. M. White, D. H. Hope, H. P. Baker, M. Yates, L. M. White,
W. B. Baker, R. E. Burch, F. F. Baker, W. C. Swope, W. Q. Conway, H. H. Noland, A. B. Caruthers, Duncan McGregor

Fratres in Urbe.

Arthur W. Bush, Harry Atkinson, Elmer Henderson, Don Pedro Bartley, Ed. Robnett, Jas. S. Morrison,
Wm. H. Henderson, J. Hart Brown, Clive D. Scott, Duncan McGregor, Prof. Noble B. McKee.

Missouri Beta Chapter of Phi Delta Theta.

One of the oldest secret societies of Western origin is Phi Delta Theta and for the past fifteen years has had active chapters in more Colleges and Universities than any other similar organization.

It was founded Dec. 26, 1848, at Miami University, Oxford, Ohio. Rev. Robert Morrison, now a resident of Fulton, being one of the founders and authors of the "Bond."

The Missouri Beta chapter was chartered in April, 1880. For twenty years, through sunshine and shadow, the chapter has valiantly strived to uphold the banner of blue and white and to maintain the standard of excellence set for them and their brothers by their founders and their "Bond."

The Chapter is now pleasantly located in the Bush Block where they occupy a suite of rooms, which have been elegantly refitted this year, wherein our sisters have been pleasantly entertained at a number of informal gatherings.

The prospects, at present, of entering a Chapter House are indeed more promising than ever before. The active members for the current year are: Wm. Chrisman Swope '00, Frank Fleming Baker '01, Albert Bowen Caruthers '01, J. K. Black '01, Wm. Quarrels Conway '01, D. Howard Hope '01, Edgar Christy Knox '02, Martin Yates Jr., '02, Richard Edwin Burch '03, E. R. Byrd '03, W. B. Baker '03, Hinton H. Noland '03, David Robertson '03, Leander Mitchell White '03, Robert Melvin White '03.

The members of Missouri Beta do not confine themselves entirely to scholarship but engage in the manly sports and participate in society.

All visiting Phis are welcome. On Monday night of each week the Phis may be found assembled in their fraternity rooms, where an evening is most pleasantly spent.

And not seldom indeed may be heard the yell:

Rah, Rah, Rah!
Phi Kappa
Phi Delta Theta,
Rah, Rah, i ah!





Etta Turner. Nellie Harrison. May Boyd. Phora Leonard. Perilla Leonard. Harriet Wilson.
Sarah McCue. Mary Tate. Emma Yates. Pearl Mathewson. Blanch McClintie.

Phi Kappa Chi Sorority.

Phi Kappa Chi.

In view of the opportunity for self improvement and mutual benefit afforded by a Sorority to its members, in January, 1898, seven young women, becoming interested in this work, organized the Phi Kappa Chi Sorority.

The memorable Day which saw its birth was the twenty-first of January, 1898. It is exclusively a young ladies' Sorority, and, though young in the point of time, has been very successful. The young ladies who figure as charter members are as follows: Misses Bess Abernathy, Sallie Durley, Kittie Ewing, Mary Hill, Fan Kincaid, Sara McCue and Eliza Tate.

The growth of the Phi Kappa Chi at Synodical College has been a healthful one. It has been surrounded by influences necessary to Sorority life, such as high College spirit and a wholesome rivalry with the other Sorority, Chi Psi Phi.

During that Spring our number was increased by Misses Emma Yates, Phora Leonard, Nelle Harrison and Mary Tate. In the fall of '98 Misses Mildred White, Ethel Hinckley and Katherine Lawrence were initiated. No other additions were made until September and October '99, when affairs took a turn and Misses Etta Turner, May Byrd, Perilla Leonard, Blanche McClintic and Pearl Mathewson were initiated. In February Miss Harriet Wilson was added to the roll. Of this number there have been several who have completed the courses of study, and others have severed their connection with the College so that the present membership is ten.

The Phi Kappa Chi Sorority prides itself on being an out and out new organization. We stand upon no ruins, but upon a stable foundation of our own. Being so young, not much history lies behind our Sorority; not nearly so much as we trust lies before it. Perhaps in some distant year, when the Synodical College has become the pride of the United States, and a far-famed centre of learning, the Phi Kappa Chi Sorority will look back with profound respect to the year 1898, which saw the founding of that noble organization.

"What's the matter with the purple and white,
Phi Kappa Chi, we're all right,
Rah! Rah! Rah!"



Madge Thompson. Elizabeth Cooper. Sadie Strother. Lina Forsythe. Blossom Goss. Eliza Goggin. Edith Clagett.
 Lucile Hyde. Ruby Strickler. Era Hyde. Helen Camp. Agnes Harrison. Annie Minter. Retta Statler.

Chi Psi Phi Sorority.

Chi Psi Phi Sorority.

The Chi Psi Phi Sorority was founded at Synodical College January 15th, 1898 by Miss Isabel Ward, of Fort Smith, Arkansas. It began what has proven a successful career, with thirteen charter members, only one of whose names appears on the present chapter roll.

During the three years of its existence over thirty girls have announced their allegiance to the blue and gold, and thereby expressed their love and respect for the Forget-me-not.

It is the Chi Psi Phi girls who hasten back to College in the fall, and there is indeed a method in their madness. See how eagerly they watch the new girls as, one by one, they arrive, and how they seek to fill every leisure moment with pleasure for the new comer.

Those on whom the blue ribbon has been placed, await the coming of a future Saturday night with fear and trembling, and happy indeed is she who feels able, after having the mysteries of this order disclosed to her, to join in the happy chorus with which the hall resounds.

"Doom a laka, Boom a laka,
RI! RI! RI!
Chicalaka, Chicalaka,
Chi Psi Phi!"

Annie Minter, Keytesville, Mo.,

Agnes Harrison, Kennett, Mo.,

Edith Clagett, Palmyra, Mo.,

Helen Camp, Richmond, Va.,

Retta Statler, Oak Ridge, Mo.,

Elizabeth Cooper, Fulton, Mo.,

Lina Forsythe, Paris, Mo.,

Sudie Strother, South McAlester, Okla.,

Blossom Goss, South McAlester, Okla.,

Madge Thompson, (Masco) St. Louis, Mo.,

Elizabeth Goggin, Blackburn, Mo.,

Ruby Strickler, Columbia, Mo.,

Lucille Hyde, Salisbury, Mo.,

Eva Hyde, Salisbury, Mo.





Grace Patton. Esther Henderson. Mary Brown. Sadie Leavell. Marian Watson. Mabel Patton. Mary Kerr. Pinkney Hill. Mary Baker.
Evelyn Humphreys. Jane Curd. Grace Herckenrath. Lou Belle Leonard. Fanny Watson. Lillian Herckenrath. Marian Marquess. Helen Patton

Beta Sigma Omicron Sorority.

Beta Sigma Omicron.

Beta Sigma Omicron was founded in 1888 by three students of Missouri University and now numbers over one hundred loyal sisters. Beta Chapter in Synodical College in 1891. Gamma in Missouri Valley in 1892 and Delta in Sedalia High School in 1898.

The high social standing of the members has ever been a source of pride and not a few have won distinction in intellectual pursuits. The pin has the three Greek letters in the name with the Sigma in the center and jeweled. The flower is the red carnation. The colors, ruby and pink. The flag is composed of three bars, two of pink and one of red in the center, 1888 on the upper bar, Beta Sigma Omicron on the center, and three stars on the lower. The yell is,

Toxu, toxu, foxu, ton,
Beta Sigma Omicron! Rah!

Beta Chapter was chartered in '91 with six students of Synodical as a foundation, and at the present time numbers over fifty loyal sisters.

Once each week the members gather in their different homes for the regular Chapter meeting and as one of the many courtesies shown by the Missouri Beta of Phi Delta Theta of Westminster College, their hall is loaned for initiations. Several times each year the members entertain their young gentlemen friends, and many are the little gatherings from which those of the sterner sex are excluded.

Among our numerous honor sisters may be mentioned, Mrs. Jas. W. Harris, Misses Ruth Bartley, Edna Bartley, Mary B. Kerr, Hattie Gordon, Jane Curd and Marian Marquess.

1900 Chapter Roll.

Misses Jane Curd, Grace Herckenrath, Esther Henderson, Marian Watson, Sara Leavell, Frances Watson and Evelyn Humphrey.

1901 and 1902 Chapter Roll.

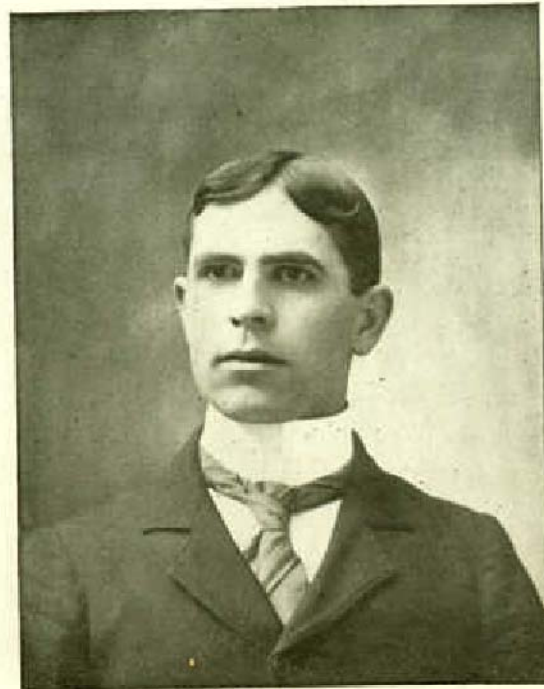
Misses Elizabeth Pinkney Hill, Grace Patton, Mary Baker, Lou Bell Leonard and Lillian Herckenrath, Marian Marquess and Helen Patton, Class '02.

Associate Members.

Mary Kerr, Westminster, Elizabeth Kerr, Lucy V. Kerr, Mabel Patton, Mary Bailey, Erna McGregor, Mary B. Brown, Ruth A. Bartley, Edna Bartley, Irene Baker, Annie Brown, Erna Watson, Mrs. J. S. Morrison.



WALTER FRAZIER McMILLIN, *Beta Theta Pi*,
Winner of Oratorical Contest, '06.



O. L. BYRNS,
Inter-Collegiate Committeeman.



N. C. WHALEY, *Kappa Alpha*,
Winner of the Julia McNair Wright Declamatory Medal, '00.



WALTER G. BRYAN,
Editor of *The Searchlight* '00.

Prominent Alumni.



J. McD. TRIMBLE,
Prominent Attorney of Kansas City.



ALBERT E. BERRY,
School Commissioner of Callaway County.



R. M. (BOB) WHITE,
Editor Mexico Ledger.



PROF. LYNN F. GLOVER,
Principal West Public Schools, Fulton, Mo.

Morton H. Pemberton as a Humorist.

WESTMINSTER is rich in the fame of her sons. Among those who are fast gaining a reputation perhaps there is not one more rapidly rising than Morton H. Pemberton, of Fulton, Mo., of the class of 1895.

Immediately after finishing his education in Westminster Mr. Pemberton entered the Law Department of the State University of Missouri, and while there won many high honors. He was editor in chief of the *Savitar*, the University annual, and for two years was editor of the *M. S. U. Independent*. He also won the two highest medals in oratory, the inter society medal, and the Stephens medal. Since graduating in '97 he has been practicing law in Fulton.



M. H. PEMBERTON, '95.
him would have known it. He is a pleasing speaker, decidedly humorous, and his audience was not

The humorous writings of Mr. Pemberton signed "Reuben" have brought forth much favorable comment and been copied by many papers throughout Missouri. The *Salisbury Progress* says: "If it is not uncomplimentary to the remainder of the *M. S. U. Independent* the cream of it is Reuben's articles and letters. Missouri has produced Mark Twain and Eugene Field, and it is not unreasonable to hope that "Reuben" may reach the same class." In May Mr. Pemberton was invited to deliver a lecture at the University in the vein of his humorous writings, and he has proven even better on the platform than with the pen. The success of this lecture places him in the best class of platform speakers and entertainers. The *Globe Democrat* says this of lecture delivered at the University. "M. H. Pemberton, of Fulton, Mo., a former student of Missouri University, lectured in the chapel of this institution last night. It was Mr. Pemberton's first attempt as a platform entertainer, but no one who heard

only sympathetic, but thoroughly delighted with the lecture."

The Columbia Statesman says: "Morton H. Pemberton's lecture Saturday night, entitled, "From Plow Shoe to Patent Leather, and From Bob Tail to Full dress," was altogether unique. It was not simply a humorous dissertation; it abounded in pathetic paragraphs, which touched the tenderest chords of human sympathy. His first sentence captured the audience, and the applause scarcely subsided until he left the platform. The lecture being brim full of rich satire, laughable incidents, and tender pathos, kept the audience in the best of humor throughout.

The Columbia Herald says: "Reuben" or in other words Morton H. Pemberton delivered a lecture at University of Missouri Saturday night, Reuben is the name under which Mr. Pemberton has written many excellent articles for the Independent. The address was full of good thought, and Mr. Pemberton showed much ability in passing from the light strains of humor into solid common sense, at times illumined with a tinge of pathos. Mr. Pemberton has a large fund of natural ability and bids fair to achieve success as a lecturer, provided he decides to devote himself to such work."

The M. S. U. Independent says: "Mr. Pemberton was not wholly "funny" as the gallery has it—there were passages of deep seriousness and high forensic merit which evoked round after round of applause." "His place is on the platform, a fact which his success in his first venture before one of the most critical audiences in the state can prove. As an orator Mr. Pemberton more than surpassed the expectations of his friends. He was perfectly natural and easy, and discarded all affectation as readily as if he had been on the stage twenty years. If art be the art of concealing art then verily is Mr. Pemberton an artist when it comes to moving an audience."

"An analysis of Mr. Pemberton's particular humor reminds us of the broad fun of Ex-Governor Bob Taylor, with the dainty ridicule of Thackeray. A great many abuses have been laughed off the stage, just as Mr. Pemberton attacks the absurdities of life in the pure light of fun. That he may one day enter this broad field is the confident prediction of all who are acquainted with him and who heard his maiden effort Saturday evening."

The SEARCHLIGHT rejoices to see one of Westminster's sons making such rapid strides to success. Mr. Pemberton should certainly try his hand again in the lecture field.

College Roll.

Westminster College.

FRANK FLEMING BAKER, *Phi Delta Theta*. Fulton, Mo.

*"With teachers he'll never disagree,
If they'll recite, great goodness, why should he."*

Entered College 1895 Philalethian. Referee on Foot Ball Team '00. Honorable mention 1897. Member of Skulls of Seven. Honorary member of Beta Sigma Omicron. Class '02.

W. B. BAKER, *Phi Delta Theta*. Fulton, Mo.

"And both were young and one was beautiful."

Entered College 1898. Member 1898-99 Foot Ball Team. Member of Skulls of Seven and Skulls of Keys. Officer in Freshman Class 1899-00. Honorary member Phi Kappa Chi. Class '03.

GEO. O. BAKER. Mexico, Mo.

*"Fare thee well! and if for ever
Still for ever fare the well."*

Entered College 1899. Member Mandolin Club. Member Foot Ball Team.

A. L. BEALE. Odessa, Mo.

"Thou hast no faults, or I no faults can app."

Entered College in 1897. Philologic, Sec'y and Censor '98. Censor '99. Representative of 'Logic Society Julia McNair Wright Contest '00. June Essayist '00. Class '02.

OVID BELL. Fulton, Mo.

"Tall you say? aye, and stender too."

Entered College 1899. Philologic, President '99. Manager Foot Ball Team. Special student.

JAMES KENNEDY BLACK, *Phi Delta Theta*. Clayton, Mo.

*"O wad some power the giftie gie us,
To see ourselves as others see us."*

Entered College Second Term, 1898. Philalethian, Censor and Critic, one term each. Member 1899-00 Foot Ball Team. Honorary member of Chi Psi Phi. Class '01.

JOHN FREDERICK BOLTON, *Beta Theta Pi*. Eureka Springs, Ark.

"Thy modesty is a candle to thy merit."

Entered College 1896. Philalethian, Sec'y 1897-99. First and Second Critic 1900. President Westminster Mandolin Club '97-98. Member Westminster Mandolin Club '99-00. June Essayist '00. Charter member Sigma Sigma Sigma. Skulls of Seven. Class '00.

RAYMOND SIDNEY BRANCH, *Kappa Alpha*. Higginsville, Mo.

*"And 'tis by faith that every "Blossom"
Enjoys the air it breathes."*

Entered College 1899. Philalethian, Vice-President '99. Librarian '00. Corresponding Sec'y Y. M. C. A. '99-00. Honorary member Chi Psi Phi. Class '02.

ALBERT SARTOR BERGHAUSER. Fulton, Mo.
"It is a man's sincerity and depth of vision that makes him a poet."

Entered College 1897. Associate Editor Collegian. Picture, Poem, and favorable comment St. Louis Republic '99. Class '02

WALTER GREGORY BRYAN. Fulton, Mo.
"Great floods have flown from simple sources." (Copied from SEARCHLIGHT '06.)

Entered College 1895. Philologic, Censor '96. Sec'y '97. Member of June Committee 1896-00. Winner of Julia McNair Declamatory Contest '97. Declaimer June Program, '97. Second place Academic Declamatory '96-97. Local Editor *Westminster Student* '97. Officer Y. M. C. A. '96. (Absent '97 to '99, Tutor at Kemper School, Boonville). Re-entered College '99 on Kemper Scholarship. Editor in Chief and Business Manager *Collegian* '99-00. Vice-President Philologic Hall '99. Elected President of 'Logic Hall '99 and Committeeman Inter-Collegiate Oratorical Association '00. (Resigned). Debater Annual Inter-Society Debate '99. Member Joint Committee '99. Member Westminster Mandolin Club '97, '99-00. Editor and Business Manager SEARCHLIGHT 1900. Class '01.

RICHARD EDWIN BURCH, *Phi Delta Theta*. Oceola, Mo.
"Little, but Oh my!"

Entered College 1899, Philologic, Censor Second Term. Debater on June Program. Manager Base Ball Team '99-00. Treasurer Freshman Class 1899-00. Member of Skulls of Seven, and Skulls and Keys. Honorary member of Phi Kappa Chi. Class '03.

E. R. BYRD, *Phi Delta Theta*. Jackson, Mo.
"The devil hath power to assume a pleasing shape."

Entered College 1899. Member '99-00 Foot Ball and Base Ball Teams. Member of Skulls of Seven, and Skull and Keys. Class '03.

OLIVER LUTHER BYRNS. Mexico, Mo.
"Reputed wise for saying nothing."

Entered College 1897. Philologic, Sec'y '98. Vice President Y. M. C. A. '99. President Missionary Committee '99. Philologic Vice-President and Treasurer '98; Treasurer '00. Committeeman Inter-Collegiate Oratorical Association '00. Member Joint Committee of '98-99. Class '01.

D. W. BREID. Fulton, Mo.
*"The dawn upon his lip,
Lay like the shadow of a hovering kin."*

Entered College 1900. Special Student.

CHAS. COPE COLLET, *Kappa Alpha*. Fulton, Mo.
"Dreaming of love so true."

Entered College 1896. Philologic, Pros. Atty., Censor '99. Member Y. M. C. A. Class '01.

JNO. W. CREIGHTON. Creighton, Mo.
"John, say Jo John."

Entered College 1899. Philologic, Y. M. C. A.

- ALBERT BOWEN CARUTHERS, *Phi Delta Theta*, Kennet, Mo.,
*"And when a lady's in the case,
 You know all other things give place."*
 Entered College 1897. President Athletic Association 1898-99-00.
 Member of Foot Ball Team 1897-98-99 Member Base Ball Team.
 '98-99. Sec'y Sophomore Class '98-99. Athletic Editor *Collegian* '99.
 Won 100 yard dash, 60 yard dash, hop, step and jump. Field Day '98.
 Honorary member of Chi Psi Phi. Class '01.
- WILLIAM ASA CLARK, Latah, Ore.
*"Father calls me William, sister calls me Will,
 Mother calls me Willie, but the fellows call he Bill."*
 Entered College 1899. Absent Second term.
- WM. QUARLES CONWAY, *Phi Delta Theta*, Sedalia, Mo.
"The ladies call him sweet."
 Entered College 1898. Philologic, Censor one Term. Treasurer
 of Y. M. C. A. '98-99. Treasurer Sophomore Class '98-99. Member
 Foot Ball Team '99. Honorary member of Chi Psi Phi. Class '01.
- CLYDE ESTIC COWHERD, Santa Fe, Mo.
"To be, or not to be; that is the question."
 Entered College 1890. Philalethian, Secretary '89. Charter
 member of "The Ancient Order of Peckerwoods." Class '02.
- HOMER DILLARD, Shamrock, Mo.
"A diller, a dollar, a ten o'clock scholar."
 Entered College 1899. Philalethian, Vice President '00. Mem-
 ber Foot Ball Team. Absent Second Term.
- BARRY CURTIS DIVERS, Carrington, Mo.
"Now and then he raised his eyes, and they were large."
 Entered College 1896. Philologic, Secretary '99. Right end
 Foot Ball Team '99. Class '02.
- EWELL TRAVIS DRAKE, *Kappa Alpha*, Santa Fe, Mo.
"And I wouldn't be a duck, would you?"
 Entered College 1899. Philologic, Chaplain '00. Y. M. C. A.
 Cabinet '99-00. Member Base Ball Team '00. Class '03.
- FREDRICK HAMILTON DRYDEN, Montgomery City, Mo.
"And in the little bulk a mighty soul appears."
 Entered College 1899. Philologic, Sergeant-at-arms '99.
- CHUZA SEVEN DUNLAP, Fulton, Mo.
"Good luck lies in odd numbers, so they say."
 Entered College 1899. Member Foot Ball Team.
- CLAUDE EIGHT DUNLAP, Fulton, Mo.
"A horse! A horse! My kingdom for a horse!"
 Entered College 1899. Member of Foot Ball Team.
- EUGENE SAM DUDLEY, Toledo, Mo.
"Who is Dudley?"
 Entered College 1900.

- TAYLOR HENRY EBERSOLE. Fulton, Mo.
*"We grant although he had much wit,
 He was very shy of using it."*
 Entered College 1898. Philalethian.
- JAMES J. EGBERT, Beta Theta Pi. Chandler, Okla.
"To be a well-favored man is the gift of fortune."
 Entered College 1899. Philologic. Right Guard Westminster
 Foot Ball Team '99. First Base Westminster Base Ball Team '00.
 Class '03.
- HARVEY FRANCIS FAIT. Fulton Mo.
"With a heart for any 'Fa(ile)'."
 Entered College 1898. Member Foot Ball Team.
- MARVIN ELWOOD FARMER. Fulton, Mo.
*"For to plow, for to hoe,
 For to reap, for to sow,
 For to be a 'Farmer' boy!"*
 Entered College 1898.
- MADGE FINLEY. Fulton, Mo.
*"She is pretty to walk with,
 And witty to talk with."*
 Entered College 1898. Honorary member Kappa Alpha.
- W. C. FLETCHER. Alma, Mo.
"Why stand ye here idler?"
 Entered College 1898. Philologic, President '00. Class '02.
- HOLLY MORGAN HALE, Kappa Alpha. Shamrock, Mo.
"Needs not the painted flourish of our praise."
 Entered College 1899. Philologic. Orator on contest '00. Mem-
 ber Y. M. C. A. Base Ball team '99-00. Class '02.
- EDDIE PEARL HARDIN. Fulton, Mo.
"The Pearl of greatest price."
 Entered College 1899.
- FREDERICK HAUENSTEIN. Tuscumbia, Mo.
*"Whence is thy learning? Hath thy toll
 O'er books consumed the midnight oil?"*
 Entered College 1896. Philalethian. Cowen German Prize '98.
 Class '00.
- HALBERT ROLAND HILL, Beta Theta Pi. Fulton, Mo.
"If love is but dreaming, Oh let me never wake."
 Entered College 1899. Cor. Sec'y Y. M. C. A. '99. Treasurer Foot
 Ball Team '98. President Tennis Club '99. Member Skulls of Seven.
 Honorary member Beta Sigma Omicron. Class '01.
- WALTER CLINTON HOLT. New Bloomfield, Mo.
"Blessings on thee, little man."
 Entered College 1898. Philologic.

- D. H. HOPE, *Phi Delta Theta*. Shawnee town, Mo.
"Hope is the best possession,"
 Entered College 1897. Philalethian. Censor one term. Treasurer two terms. Member Foot Ball Team '97-98, '98-99, '99-00. Captain Foot Ball Team '99-00. Member Base Ball Team '97-00. Captain Base Ball Team '99-00. Member of Skulls of Seven and Skulls of Keys. Class '01.
- H. H. HOUCHINS. Fulton, Mo.
"Where am I" "at"?"
 Entered College 1899.
- HARRY WALTER HOUF. Fulton, Mo.
"Now may Jove, in his next commodity of hair send thee a beard."
 Entered College 1895. Philalethian. Giftorian June Program. Class '00.
- HARLAND CORWIN HURD. Ham's Prairie, Mo.
*"And still they marveled, and still the wonder grew,
 That one small head could carry all he knew."*
 Entered College February 1898. Philalethian, Vice President '98. President '00. Debater Inter-Society Debate '99. Lethian representative Julia McNair Wright Contest '00. Class Orator '00. Address to Alumni '00. Class '00.
- JAMES BEVERLY JONES, *Beta Theta Pi*. Fulton, Mo.
"A Mother's pride, is Father's joy"
 Entered College 1896. Philologic. Vice President '98. Secretary '99. Treasurer '99. President '00. June Essayist 1898. June Orator 1899. Scholarship '97-98. President Junior Class '98-99. President Senior Class '99-00. President Student Body '99-00. Secretary and Treasurer Tennis Club. Second place Oratorical Contest 1899. Charter Member Sigma Sigma Sigma. Class '00.
- MARY BELL KERR. Fulton, Mo.
"Nature has given woman such power that the law has very wisely given her little."
 Entered College 1898. Honorary member of Beta Theta Pi.
- JOHN WM. KESTER. Fulton, Mo.
"An honest man's the noblest work of God."
 Entered College 1899.
- ROBERT EDWARD KING, *Kappa Alpha*. St. Louis, Mo.
"Shall I not take wine ease?"
 Entered College 1899. Member Skulls of Seven. Member Foot Ball Team '99. Member Base Ball Team '00.
- E. C. KNOX, *Phi Delta Theta*. Independence, Mo.
*"A foot more light, a step more true
 Ne'er from the heath flower dashed the dew."*
 Entered College 1899. Member Westminster Mandolin Club. Honorary member Chi Psi Phi. Class '02.

JOHN WILYTE LEWIS, Beta Theta Pi. Buffalo, New York.

"This was a man."

Entered College 1899. Philologic. President Y. M. C. A. '00. Westminster Representative to the Lake Geneva Y. M. C. A. Student Conference '00. Class '03.

HERBERT ROY LIVINGSTON, Kappa Alpha. Ash Grove, Mo.

"Trouble teaches men how much there is in manhood."

Entered College 1898. Philologic, President '99. Y. M. C. A. President '99. Winner Jas. H. Brooks Bible Prize '99. Honorary member Chi Psi Phi. Left College February '00.

J. C. LYNES.

Ham's Prairie, Mo.

*"The greatest hero of the whole
Is he who does himself control."*

Entered College '00. Philologic.

CLARENCE FIELD MCCALL.

Reform, Mo.

"To try thy eloquence note his time."

Entered College 1898. Philologic, Secretary '98. Critic '00. Librarian '00.

JESSE WALLACE MCINTIRE.

Fulton, Mo.

"I have a talent been to industry."

Entered College 1899. Class 03.

WALTER FRAZIER McMILLIN, Beta Theta Phi. Jefferson City, Mo.

"The orator is the mouth of a nation."

Entered College 1897. Philalethian, Secretary '97. President '98. President '99. Censor '99. Librarian '00. Treasurer '00. Winner Oratorical Contest '00. Debater, Inter Society Debate 1899. June Debater '99. Vice President Sophomore Class '98-99. June Declaimer '00. Recording Secretary Y. M. C. A. '99. Honorary member Chi Psi Phi. Class '01.

FRANCIS DANIEL MAHONEY.

St. Louis, Mo.

"Cupid have mercy."

Entered College 1899. Philalethian.

FRAZIER NESBIT MALONEY.

Fulton, Mo.

"A man he waste all his country dear."

Entered College 1899.

THOS. MILLER MAUGHS.

Fulton, Mo.

"He fits thy age such toil (t) to undertake."

Entered College 1899. Member Base Ball Team '00.

R. N. MIRTS.

Fulton, Mo.

"His resistless eloquence decided at will that force democracy."

Entered College 1898. Philalethian. Special Course.

JAS. STUART MORRISON, B. S. '93. Phi Delta Theta. Fulton, Mo.

"The schoolmaster armed with his primer can conquer the soldier with his bayonet."

Entered College 1899. Special Course for A. B. Degree.

IRVIN G. MITCHELL (pledged) Phi Delta Theta. Kirkwood, Mo.
*"There was a soft and pensive grace
A cast of thought upon his face."*
Entered College 1899. Philalethian. Vice President '00. Hon-
orable mention in June '00. Class '03.

FRANCIS JAMES NICHOLS. Fulton, Mo.
*"Of manners gentle, of affections mild,
In wit a man, simplicity a child."*
Entered College 1899. Philologic. Vice President '00.

H. H. NOLAND, Phi Delta Theta. Kansas City, Mo.
"With such hair,"
Entered College 1899. Philologic. Member '99 Foot Ball
Team and '00 Base Ball Team. Officer Freshman Class '99-00. Mem-
ber of Skulls of Seven and Skulls of Keys. Honorary member of Phi
Kappa Chi. Class '03.

JAMES T. OLIVER. Fulton, Mo.
"Describe him who can!"
Entered College 1899.

WESLEY THORNHILL PASLEY. Williamsburg, Mo.
"Simply simple."
Entered College 1898.

WILLIAM OLIVER PAYNE. Ham's Prairie, Mo.
"It is a friendly heart that has plenty of friends."
Entered College 1899. Philologic. Secretary '00.

ROLLIE EVERT PETERS. Shamrock, Mo.
"What shall I do to be forever known?"
Entered College 1898. Philologic. Censor '00. Chairman Fi-
nancial Committee Y. M. C. A. '00. Cowan German Prize '00.

J. R. PRATT. Fulton, Mo.
"Just slow, I think,"
Entered College 1899. Philologic. Y. M. C. A.

WILLIAM ROLSEL REAVIS. Paris, Mo.
"I am wealthy in my friends!"
Entered College 1899. Philologic. Chaplain '99, Critic '00.
Treasurer Y. M. C. A. Charter member of "The Ancient Order of
Peckerwoods."

JOHN J. RICE Jr. Fulton, Mo.
"Any more J-ags?"
Entered College 1899. Special Student.

WALTER M. ROBINSON. Fulton, Mo.
"Thy good nature hath made thee fat."
Entered College 1899. Member Foot Ball Team '99

- GEO. M. ROBINSON. McCredie, Mo.
*"I hold him the greatest hero born
 Who gets up early in the morn."*
 Entered College 1897. Philalethian. Class '01.
- ROBERT MILTON ROBINSON. Fulton, Mo.
"Away with work, I'll none of it."
 Entered College 1899. Philalethian, Vice President '00. Class '03.
- DAVID ROBERTSON, Phi Delta Theta. Mexico, Mo.
"There is a false modesty which is vanity."
 Entered College 1899. Charter member O. K. W. Class '03.
- FELIX B. ROOTES. Tebbetts, Mo.
"What's in a name."
 Entered College 1899.
- DAVID JONES ROOTES. Effe, Mo.
"I live for those who love me."
 Entered College 1899.
- LYNN FRANCISCO ROSS, Beta Theta Pi. Pilot Grove, Mo.
*"The lover, all as frantic,
 See's Helen's beauty in a brew of Egypt."*
 Entered College 1896. Philologic, Secretary '96. Vice President '97. Critic '99. Treasurer '98. President '99. June Debater '98. June Debater '00. Annual Inter Society Debater '99. Y. M. C. A. President '98. Honorary member of Chi Psi Phi. Valedictorian Class '00. Class Poet '00.
- F. H. ROSEBROUGH. St. Louis, Mo.
*"In mathematics he was greater
 Than Tycho Brake or Erro Peter."*
 Entered College 1900.
- JUDSON E. SANDERSON. Fulton, Mo.
"He's something like a wheel whose 'spokes' tend to tire."
 Entered College 1899.
- SAMUEL SANDERSON. Fulton, Mo.
"What a splendid thief he is of his tongue."
 Entered College 1898. Philalethian. Catcher Base Ball Team '00. Half Back Foot Ball Team '98. Class '03.
- WILLIAM J. SCHOTT, Beta Theta Pi. Jefferson City, Mo.
"Fashioned so tenderly, young, and so fair."
 Entered College '99. Member of Y. M. C. A. Member Westminster Mandolin Club '99-00. Honorary member Chi Psi Phi. Class '03.
- GUSTAVUS ADOLPHUS SCHAEFER, Kappa Alpha. Appleton, Mo.
"At home."
 Entered College 1896. Member Skulls of Seven. Class '01.

CARY C. SHAVER. Lilly, Mo.

"Men in rage strike those who wish them best."

Entered College 1899. Philalethian, Librarian '99. Censor '00. Secretary '00. Judge Inter Society Mock Trial '00'. Debater on June Program '00. Class '03.

HARRY CLARENCE SHIFFLER. Fulton, Mo.

"His bright smile haunts me still."

Entered College 1900. Philologic. Member Y. M. C. A. Class '03.

LYMAN STEED, Kappa Alpha. St. Charles, Mo.

"Truth from his lips prevailed with double sway."

Entered College 1896. Philologic. Censor '97. Vice President '98. Censor '99. President '99-00. Disclaimer June Program '98. Disclaimer June Program '99. Disclaimer June Program '00 Treasurer of Y. M. C. A. '98. Member Y. M. C. A. Cabinet '98-99, '99-00. Winner Julia McNair Wright Declamatory Contest '99. Assistant Editor Collegian '99-00. Chapel Organist '96-00. Member Westminster Mandolin Club '97, 99, 00. Member Tennis Club '98, 99, 00. Honorary member of Chi Psi Phi. Class '00

BERNIE BURNHAM SIMCOE. Calwood, Mo.

*"His corn and cattle were his only care,
And his supreme delight, a country fair."*

Entered College 1900.

GEORGE ROBERT SUMMERS, Beta Theta Phi. Kennet, Mo.

"Who does not enjoy the beautiful summers?"

Entered College January 1898. Philologic, Secretary '99. Secretary '00. Second place Julia McNair Wright Contest '00. June Orator '00.

W. C. SWOPE, Phi Delta Theta. Independence, Mo.

"A youth to fortune and to fame unknown."

Entered College 1896. Philalethian, Censor and Librarian. Member of Y. M. C. A. Class '00.

HERBERT ISAAC TAYLOR. Fulton, Mo.

*"The Taylor we know,
Not the one we once."*

Entered College 1899.

HARRY W. THOMAS, Kappa Alpha. Centralia, Mo.

"Much study is a weariness to the flesh."

Entered College 1899. Class '03.

WM. PERCY TUCKER. Fulton, Mo.

"Plague! if there aint sompin' in work 'n' kind o' goes ag'in my convictions."

Entered College 1898.

LARY TYLER. McCredie, Mo.

*"Scared! I thought it was the devil
Or maybe the Prof. on my track,
I cleared the fence on the level
And not for an instance looked back."*

Entered College 1899. Philologic.

- L. D. WALKER, Farmington, Mo.
"It doth not yet appear."
 Entered College 1899.
- ERWIN LIONEL WHITNEY, *Kappa Alpha*, Sedalia, Mo.
"A sport, you say, aha! how true."
 Entered College January 1900. Philologic. Charter member O. K. W. Class '03.
- WILLIAM HENDERSON WALTHALL, *Kappa Alpha*, Fulton, Mo.
*"Some asked me where the rubies grew
 And nothing did I say
 But with my fingers pointed to
 The tips of Julia."*
 Entered College 1897. (Absent at U. S. Naval Academy '98-99). Philalethian, Assistant Captain Foot Ball Team '99-00. Member of Base Ball Team '00. Member Skulls of Seven. Class '01.
- NATHANIEL CALVIN WHALEY, *Kappa Alpha*, Osceola, Mo.
*"Facts are all who love,
 Who feel great truths and tell them,
 And the truth of truths is love."*
 Entered College 1899. Philologic. Member Finance Committee Y. M. C. A. '99-00. Chairman Social Committee Y. M. C. A. '99. Winner Julia McNair Wright Declamatory Contest '00. Exchange Editor *Collegian* '99-00. Member Skulls of Seven. Member Tennis Club. Honorary member Chi Psi Phi. Class '02.
- R. M. WHITE, *Phi Delta Theta*, Perry, Mo.
"No use for other worlds to conquer."
 Entered College 1899. Officer of Freshman Class '99. Honorary member of Phi Kappa Chi. Member of Skulls and Keys. Class '03.
- LEA M. WHITE, *Phi Delta Theta*, Mexico, Mo.
"Oh my! these journalistic warts."
 Entered College 1899. Asst. Business Manager *Collegian* '99-00. Member '99 Foot Ball Team. Charter member O. K. W. Class '03.
- MARTIN YATES, Jr., *Phi Delta Theta*, Fulton, Mo.
"I have more zeal than wit."
 Entered College 1898. Philologic. President Freshman Class of '99-00. Member Y. M. C. A. Member June Committee. Charter member O. K. W. Class '03.



College Roll.

Synodical College.

"A bevy of fair girls,"
"The noble army of martyrs."

<p>LAURA ALEXANDER, <i>"No man can write my epitaph."</i> Entered College 1899.</p>	<p>Tipton, Mo.</p>
<p>FRANCIS BLACK, <i>"She is neat as wax and fresh to view."</i> Entered College 1899.</p>	<p>Fulton, Mo.</p>
<p>MARY BAKER, Beta Sigma Omicron, <i>"Procrastination is the thief of time."</i> Entered College 1895. Sister of Phi Delta Theta.</p>	<p>Fulton, Mo.</p>
<p>MAY BOYD, Phi Kappa Chi, <i>"She looks upon men with a threatening eye."</i> Entered College 1899.</p>	<p>Vandalia, Mo.</p>
<p>EDITH CLAGETT, Chi Psi Phi, <i>"A tight heel fits long."</i> Entered College 1898. President Junior class '99. Sister of Kappa Alpha.</p>	<p>Palmyra, Mo.</p>
<p>HELEN CAMP, Chi Psi Phi, <i>"Rise honest muse, and sing the Maid of Ross!"</i> Entered College 1898. Sister of Beta Theta Pi.</p>	<p>Richmond, Va.</p>
<p>JANE CURD, Beta Sigma Omicron, <i>"What wind hath blown her hither?"</i> Entered College 1893. Marquess Music Medal '98. Sister of Phi Delta Theta.</p>	<p>Fulton, Mo.</p>
<p>LILLIAN FISHER, <i>"One that loved, not wisely, but too well."</i> Entered College 1894.</p>	<p>Fulton, Mo.</p>
<p>LINA FORSYTH, Chi Psi Phi, <i>"Oh she will sing the savageness out of a bear."</i> Entered College 1898.</p>	<p>Paris, Mo.</p>
<p>BLOSSOM GOSS, Chi Psi Phi, <i>"In every gesture dignity and love."</i> Entered College 1899. Sister of Kappa Alpha.</p>	<p>South McAlester, Ind. Terr.</p>
<p>ELIZABETH GOGGIN, Chi Psi Phi, <i>"The poet's darling"</i> Entered College 1899.</p>	<p>Blackburn, Mo.</p>
<p>LIZZIE GLENN, <i>"A progeny of learning."</i> Entered College 1900.</p>	<p>Fulton, Mo.</p>

SALLIE GLENN, Entered College 1900.	<i>"Man delights not me."</i>	Fulton, Mo.
AGNES HARRISON, Chi Psi Phi. Entered College, 1898. Junior Scholarship '98 Theta Pi.	<i>"Wee, modest, crimson tipped flower."</i>	Kennett, Mo. Sister of Beta
BELL HERNDON, Entered College 1894.	<i>"Bell! thou soundest merrily."</i>	Fulton, Mo.
EVELYN HUMPHREYS, Beta Sigma Omicron. Entered College 1895. Sister of Phi Delta Theta.	<i>"Tis better to have loved and lost, than never to have loved at all."</i>	Fulton, Mo.
EVA HYDE, Chi Psi Phi. Entered College 1900.	<i>"It might have been."</i>	Salisbury, Mo.
ESTHER HENDERSON, Beta Sigma Omicron. Entered College 1893. Sister of Beta Theta Pi.	<i>"Thy eternal Summer (s) shall not fade."</i>	Fulton, Mo.
GRACE HERCKENRATH, Beta Sigma Omicron. Entered College 1895. Sister of Kappa Alpha.	<i>"Linked sweetness long drawn out."</i>	Fulton, Mo.
HATTIE HOUF, Entered College 1895.	<i>"But what are grace thoughts to thee?"</i>	Fulton, Mo.
JESSIE HORNBECK, Entered College 1896.	<i>"Sweet as the tender fragrances that survive, When martyred flowers breathe out their little lives, Is thy remembrance."</i>	Fulton, Mo.
LUCILLE HYDE, Chi Psi Chi. Entered College 1900.	<i>"In maiden meditation, fancy free."</i>	Salisbury, Mo.
LILLIAN HERCKENRATH, Beta Sigma Omicron. Entered College 1899.	<i>"Her beauty made me glad."</i>	Fulton, Mo.
MOLLIE HOUSTON, Entered College 1898.	<i>"Let nothing disturb thee, Nothing affright thee."</i>	Fulton, Mo.
MERLE HOWE, Entered College 1898. SUN Bible Medal '98.	<i>"What! lived already?"</i>	Fulton, Mo.

- NELLE HARRISON, Phi Kappa Chi. Auxvasse, Mo.
"Maiden with most brown eyes."
 Entered College 1897.
- ORLOU HUME. Fulton, Mo.
"Long experience made her sage."
 Entered College 1898.
- PINCKNEY Hill, Beta Sigma Omicron. Fulton, Mo.
"The very pink of perfection."
 Entered College 1898. Sister of Beta Theta Pi.
- PINK HOLMAN. Fulton, Mo.
*"Whence is thy learning? Hath thy toil
 O'er books consumed the midnight oil?"*
 Entered College 1898.
- ADELIA KNIPPENBERG, Femme Osage, Mo.
"Maid of Athens."
 Entered College 1899.
- ANNIE KIRKPATRICK, Benton City, Mo.
"She is a woman, therefore to be won."
 Entered College 1896. Absent '97 and '98.
- PHORA LEONARD, Phi Kappa Chi. St. Joseph, Mo.
"A noticeable girl with large brown eyes."
 Entered College 1897. Sister of Phi Delta Theta.
- PERILLA LEONARD, Phi Kappa Chi. St. Joseph, Mo.
"Love me little, love me long."
 Entered College 1899.
- SADIE LEAVELL, Beta Sigma Omicron. Fulton, Mo.
"Men were deceivers ever."
 Entered College 1894. Sister of Phi Delta Theta.
- ANNIE MINTER, Chi Psi Phi, Keytesville, Mo.
*"Fair tresses man's imperial race ensnare,
 And beauty draws us with a single hair."*
 Entered College 1899. Sister of Phi Delta Theta.
- BLANCHE McCLINTIC, Phi Kappa Chi. Monroe City, Mo.
"Where there's a Will, there's a way."
 Entered College 1899.
- ETHEL MORRISON. Fulton, Mo.
"So wise, so young."
 Entered College 1894.
- MAUD McCLINTIC. Monroe City, Mo.
"Maud in the light of her youth and her grace."
 Entered College 1896. Sister of Beta Theta Pi.

- MARIAN MARQUESS, Beta Sigma Omicron. Fulton, Mo.
"M. is not seventeen, but she is tall and stately."
 Entered College 1894. Marquess Music Medal '99. Sister of
 Kappa Alpha.
- PEARL MATHEWSON, Phi Kappa Chi. New Madrid, Mo.
"She has hair of a golden hue."
 Entered College 1899.
- CLARA OWEN. Fulton, Mo.
"Eyes that droop like summer flowers."
 Entered College 1900.
- EMMA PRATT. Fulton, Mo.
"Somebody's darling."
 Entered College 1896.
- GRACE PATTON, Beta Sigma Omicron. Fulton, Mo.
*"A form more fair, a face more sweet,
 Ne'er has it been my lot to meet."*
 Entered College 1894. Sister of Phi Delta Theta.
- HELEN PATTON, Beta Sigma Omicron. Fulton, Mo.
"Dainty little maiden."
 Entered College 1895. Absent 98-99. Sister of Beta Theta Pi.
- MATTIE PRATT. Fulton, Mo.
"They say she is dying all for love, but that can never be."
 Entered College 1896.
- SELEY PENNY. Fulton, Mo.
"A Penny for your thoughts."
 Entered College 1898.
- PRICE ROBINSON. Fulton, Mo.
"She never told her love."
 Entered College 1899.
- ALLIE STANDEFER. Fulton, Mo.
"Her eyes are homes of silent prayer."
 Entered College 1895.
- EDNA SARTOR. Fulton, Mo.
"Who shall call thee ungentle?"
 Entered College 1898.
- RETTA STATLER, Chi Psi Phi. Oak Ridge, Mo.
"There is no power in the tongue of man to alter her."
 Entered College 1897. Absent '98-99
- RUBY STRICKLER, Chi Psi Phi. Columbia, Mo.
"Of wanners gentle, of affections mild."
 Entered College 1899.

- SUDIE STROTHER, Chi Psi Phi. South McAlester, Ind., Terr.
"Care will kill a cat, and therefore let's be merry."
 Entered College 1899.
- PEARL SIMCOE. Fulton, Mo.
"A Pearl of great price."
 Entered College 1900.
- ETTA TURNER, Phi Kappa Chi. Vandalia, Mo.
"Fratily thy name is sooman."
 Entered College 1898.
- MARY TATE, Phi Kappa Chi. Calwood, Mo.
"Quiet as a nun, breathless with adoration."
 Entered College 1896.
- BESSIE WILSON. New Bloomfield, Mo.
"Silence is golden."
 Entered College 1899.
- FANNIE WATSON, Beta Sigma Omicron. Fulton, Mo.
"Hope deferred maketh the heart sick."
 Entered College 1894. Sister of Phi Delta Theta.
- HATTIE WILSON, Phi Kappa Chi. St. Joseph, Mo.
"Love is enough."
 Entered College 1900.
- MARIAN WATSON, Beta Sigma Omicron. Fulton, Mo.
"My man is as true as steel."
 Entered College 1895. Sister of Phi Delta Theta.
- ERNA WEST. Fulton, Mo.
"The noblest mind, the best contentment has."
 Entered College 1899.
- EMMA YATES, Phi Kappa Chi. Fulton, Mo.
"A girl she ran to all the country dear."
 Entered College 1897.
- JAILY YATES. Fulton, Mo.
"Last but not least."
 Entered College 1894.

Primary Pupils.

"Ah! what would the world be to us if the children were no more."

- Harrison Grant Fulton, Mo.
 Zella Harner Fulton, Mo.
 Bernice Jameson Fulton, Mo.
 Lucille Levy St. Louis, Mo.
 Martha Lawther Fulton, Mo.
 Shields Moore Fulton, Mo.

Bessie Pollard	Fulton, Mo.
James Pollard	Fulton, Mo.
Madge Thompson	St. Louis, Mo.
Harrison Walton	Fulton, Mo.
Louise Walton	Fulton, Mo.
Peyton Walton	Fulton, Mo.
Marjory Young	Fulton, Mo.
Virginia Yates	Fulton, Mo.



A GLIMPSE OF SYNODICAL'S EAST LAWN.



SYD. PRENTICE

The Skulls of Seven.



THE "Skulls of Seven," a religious organization formed for purely secular purposes, was originally founded by Christopher Columbus in 1492. Its career since that date has been marked with many changes of fortune, but its influence has always been potent in the greatest events in history, and the leaders of our own, as well as former times, have belonged to this society. Among prominent statesmen who have worn this orders' badge, let it be sufficient to mention Washington, Jefferson, Webster, Clay, Edmund Burke and Pocahontas. Arnold committed treason because "Mad Anthony" Wayne black-balled him, and Burr fell from honor from jealousy of Jefferson, then "Most Eminent Nux."



The name of this society varies, but its spirit is always the same. Philalubergs, Octavaes, Zeta Tau Nu, Alpha Eta Omega, and various other titles under which the society has been known at Westminster. Prominent Alumni whom it claims with pride are "Jack" Stagg, "Bo" Steele, "Hercules" Gadson, "Fatty" Gates, "Bones" Mitchell, "Dog" Lamkin, "Yellow Kid" Botts, "Bob" Cowan, not to mention Judge St. Clair Osceola Ferguson, Liar in Ordinary.

The colors of the society are green and black, its badge is a green ribbon on which appear seven skulls. Its meetings are irregular hours, and its business is problematical.

A part of the duties of the members seem to make them act as gaurdian angels to the incoming Freshman. The society's semi-religious character makes them meet on Sunday morning before breakfast. Further information can be furnished by the Past Keeper of the Records, or the Lord High Everything Else. The present Chapter Roll includes:

"Skulls."

	Frank Fleming Baker.	
	D. H. Hope.	Hal R. Hill.
A. E. Schaefer.		Frederick Bolton.
R. E. King.		E. R. Byrd.

"Jaw Bones."

		Lyman Steed.
W. B. Baker.		J. K. Black.
H. H. Noland, Jr.		N. C. Whaley.
R. E. Burch.	W. H. Walthall.	

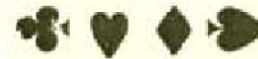


AFTER A NIGHT OUT.

Stolen Property.

Hard to Beat.

LAST night I held a little hand,
So dainty and so neat,
Methought my heart would burst with joy,
So wildly did it beat;
No other hand into my soul
Could greater solace bring,
Than I held last night, which was



and a king.



A Reward of Merit.

THE father asked: "How have you done
In mastering ancient lore?"
"I did so well," replied the son,
"They gave me an encore.
The Faculty like me and hold me so dear
They make me repeat my Freshman year."



The New Faculty.

The reality of this picture will be a thing of the past when the new faculty, unanimously elected by the student body, assumes charge:

Dramatis Personae.



Frank Daisy Mahoney, D. D., LL. D., Ph. D., "Head Push."

Jonathan Ebenezer Snowball Evans, X. Y. Z. (Assistant Head Push, Sacred Spittoon Cleaner and Keeper of the Unfrequented Library.)

Hairy W. Houf, A. M., Greek, (Prof. Houf received his A. M. at an Agricultural College for early rising.)

Jesse James Egbert, D. D., A. M., Languages (with variations used by Frank.)

W. J. Schott, D. D., LL. D., Metaphysics. (Dr. W. J.'s teaching will be intercepted with an occasional hot *S(c)hot(t)*.)

Howard Hope, B. L., B. S., Biblical Instruction. (Dr. Hope is a modern thinker. He favors Sunday study. Extract from one of his lectures: "If a man was justified in rescuing an ass from a pit on Sunday, how much more then, is an ass justified in rescuing himself!")

Felix Bonnett Rootes, D. D., D. C., and S. F. C. (Dr. Rootes gives lessons in extracting *roots* from barb wire fences without a *sign* of trouble.)

Fred Hamilton Dryden, Ph. D., Kindergarten. (Prof. Dryden will teach the young shoots how to idea and how to make sun while the hay shines.)

James Kennedy Black, D. D., A. B., Sciences. (Dr. Black served as back-stop on the Westminster base ball team and comes well recommended as a man with a scientific eye.)

Homer Dillard, D. D., A. M., Modern Languages. (Prof. Dillard's A. M. Degree is from the same College and for the same reason as Prof. Houf's. Students will be given a chance to hear the songs of "Homer," especially during election year.)

Leander Mitchell White, D. D., M. A. Latin and Etymology of Language. (Extract from lesson: "*Vir* means man, *gin* means trap, therefore, *vir-gin* means man trap.")

Peter Peter Pye.

ON March 11, 1900, in a mysterious spot, safe from all intruding, the order of Peter Peter Pye Union made its first appearance on the green earth. Although we are late in making our first appearance, our prospect for the future is glittering. With our pin we are bound together with a tie that never severs, and with our colors, pea green and pumpkin-yellow, as our protectors, no hoo-doo dares to face or deface us. Those who by good luck have ridden the goat of this glorious Union answer to roll call as follows:

Lina Forsythe, Eliza Goggins,
 Fannie Watson, Evelyn Humphreys,
 Jane Curd,
 Grace Patton, Annie Minter,
 Agnes Harrison, Phora Leonard, Edith Clagett.

The above mentioned travel the road to victory to the inspiring tune of:

"We are the stuff,
 That's no bluff,
 Hi ho, hi ho, hi ho hi,
 Hurrah, hurrah, for Peter Peter Pye."

May the members of this order ever be true and faithful sisters as long as they live up to their motto.

"My name is Jimmie,
 I'll take all you gimme."

They will never want for this world's goods. Long may they live and prosper.

The Sweet Girl Graduate.



I'm ME!
 See?
 A sunbeam
 Dream
 Of Beautiful,
 Done up in forty yards of
 mull.
 So like a rose!
 Observe my pose
 And watch the way
 I play
 Some
 Very classic tumpy-tum.
 Sweet?
 You rarely meet,
 Like me,
 A girl of such divinity.
 Jack always said I' was a
 "beaut"—
 I rather think myself I'm
 cute.

And when I sing!
 The sweetest song birds
 take to wing!
 Just listen here—
 (I fear
 To take that high refrain—
 That cold again)
 E - hem!
 E—E—'em!

a
 a- a-
 a- a-
 "A—————h!"

-i-
 Singing tra -la-la!"

(Overcome by emotion, the audience weeps so copiously that a delegation is sent in search of rubber boots.)

R. J. SMITH.



Evils never come singly—Willie Baker, Frank Baker.

To Miss Strother there is no man like the Fisher-man.

"Conspicuous by his absence(s)" from Chapel--Mahoney.

Wanted:— Nine base ball players. Apply at Westminster.

Why has cruel Cupid S(c)hot(t) Miss Goggin with his inoculating darts?

She is very Franc, and is quite fond of the leaves that Russell. Who?

Miss Goss' favorite science is botany. It must be the study of Branches that fascinates her.

Why has the circus no more attraction for Miss Harrison? Because the Rajah's (Rogers) dead.

Miss S-'s father is very much pleased to note that the future prospect to glove her (Glover) is promising.

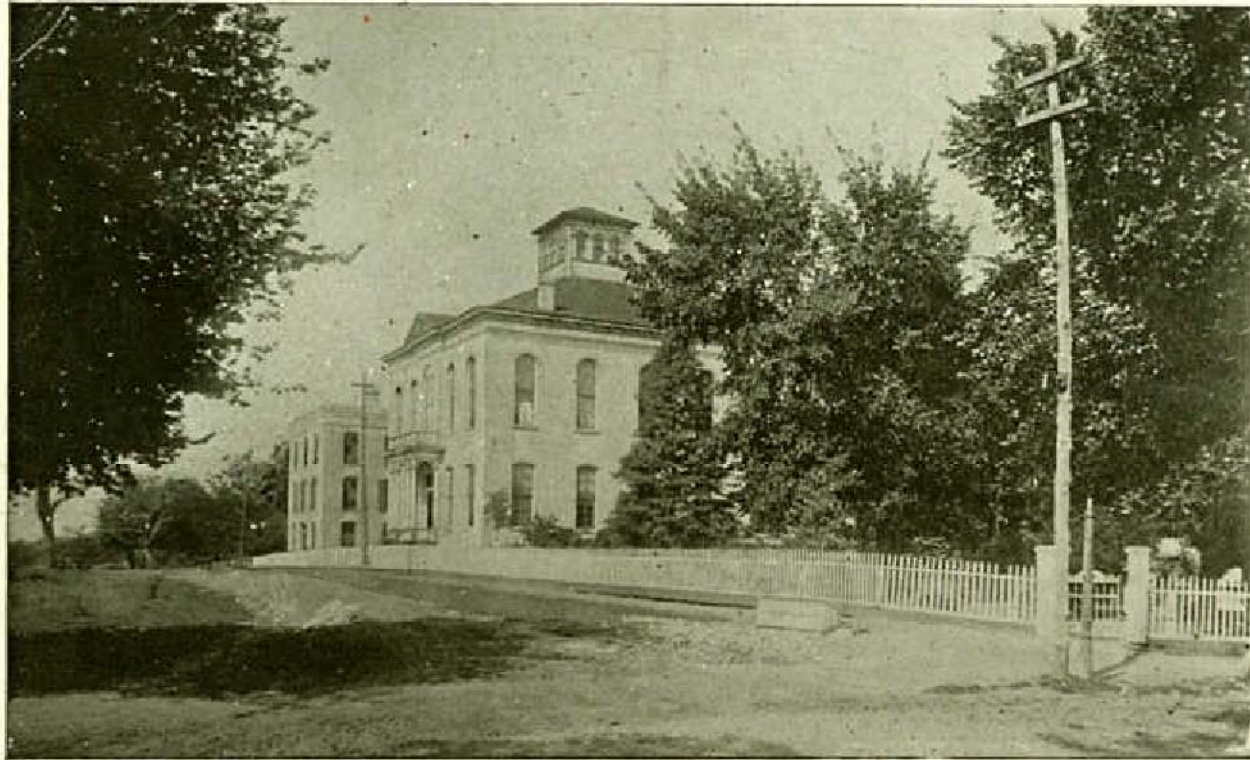
One of the Seminoles has undertaken to revise Shakespear saying: "A Steed, A Steed, My Kingdom for a Steed!"

Miss Curd is surely rapidly degenerating for she has grown so profane that she ejaculates on every occasion, Great Scott!

Not long ago the Misses Leonard received a box from home. Several of their friends came in to enjoy it with them and when Retta was asked to have some ham she replied that she only delighted in Byrd. Perilla seated near was calmly eating a nice piece of quail on toast but she for once refused to take a "Hint" and ate on. Edith as Hale as ever seemed to enjoy her What(ey)ing big piece of cake very much. Agnes could not but regret the lack of Johny cake to complete the bill of fare. Annie declined to eat fearing it would Kell(h)er and thought something to Reid would be more pleasant. Helen declared that when she thought of her purse (Percy) she lost her appetite and Phora laughingly answered that she did not understand how any one could refuse Baker's bread.



THE SEARCHLIGHT takes pleasure in recommending to its readers those firms whose names appear on the following pages.



SYNODICAL COLLEGE AND CONSERVATORY. FOR YOUNG LADIES.

Offers superior advantages for the study of Literature, Music, Art, Elocution, Physical Culture. Large, accomplished, and carefully selected Faculty of Specialists. Conservatory of Music and Art in charge of artists of rare ability. Special attention paid to manners and morals. For catalogue address,

REV. T. P. WALTON, FULTON, MO.



C. HAILE,
TRAFFIC MANAGER.

THE KATY FLYER,
THE VIA
FAST TRAIN
BETWEEN POINTS
IN
MISSOURI,
KANSAS,
THE
INDIAN TERRITORY
AND
TEXAS.



PULLMAN PALACE BUFFET SLEEPERS
FREE KATY CHAIR CARS.

JAS. BARKER,
GENERAL PASSENGER AND TICKET AGENT.

ST. LOUIS, MO.

CIRCULATION JANUARY 1, 1900,
2,850.



FULTON, MO., June 1, 1900.

Mr. Westminster and Miss Synodical,
Fulton, Mo.,

Dear Friends:

I take this method to inform you and all your friends that we are proud of your students and your work. We wish you well and can print Catalogues, Programs, College Papers, etc., just as good as anybody and our work is always executed as faithfully and in keeping with our zeal for the success of home schools.

Yours truly,


THE SUN.

Godfrey & Atkinson

Have the best
Selection
of

Carpets, Rugs, Straw Mattings

AND FURNITURE.

SEE THEM 

M. E. LEAVERS,

THE LEADING

Jeweler and Optician.

Diamonds, Watches, Jewelry, Optical Goods, Etc.,

Fine Watch and Jewelry Repairing.

EYES TESTED FREE.

Main Street, Fulton, Mo.

Mercantile ...Barber Shop...

S. B. Foster, Prop.

First Class Workmen.

Fine Line Cigars.

Main Street, Fulton, Mo.

Anything and
Everything!



To be Found in Any Book Store.

*Our Prices Keep
The Stock Always
New and Fresh.*

PATTON'S BOOK STORE.

Copies of the SEARCHLIGHT on Sale.

E. H. Crowson & Co.,

Main Street Livery Stables

First Class Teams and Rigs.

Fine rubber tired buggies always on
hand. Phone 99.

MORTON, CHRISTIAN & DUNAVANT.

High
Artes **Clothiers**
and Furnishers.

*Stetson Hats,
Manhattan Shirts,
Wilson's Boys' Furnishings.*

High-Grade Shoes at Popular Prices.



Henderson & Maughs....
The Leading Clothiers.

....Fulton, Mo.

C. M. Wright & Co.,

The
Leading ...**Druggists...**

J. R. Dutton,

Complete Line of

Furniture!

Undertaking a Specialty.

Lowest Prices.

**Broadwater
& Ellis...**

* DRY GOODS, BOOTS, *
* SHOES & CARPETS. *

Bell Bros.,

*Hair Cutting, Shampooing
and Shaves. Hot and Cold
Baths at All Hours.*

BARBERS.

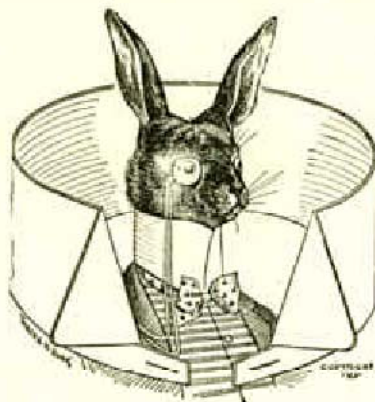
DR. H. U. WENGER.

Osteopathist.

OFFICE OVER HENDERSON & MAUGHS,
ASYLUM STREET.

The Fulton Steam Laundry.

Fulton, Mo.



Unsurpassed for quality of work, promptness and reliability. Branches throughout Missouri. We Want Agents in Every Town. Liberal Commissions. Write for Terms.

The Fulton Steam Laundry.

EAST SIXTH ST., - - FULTON, MO.

J. E. Watson....

The Up-to-Date

..Grocer..



Provisions, Queensware,
Fancy Lunch Goods, Etc.

Largest Line of
Fruits in the City.

Allegretti's Candies, 60cts per Pound.

HOME SAVINGS BANK.

FULTON, MISSOURI.

CAPITAL STOCK PAID IN, \$50,000.00.

SURPLUS 3,000.00.

OFFICERS.

J. T. BROWN, President,

J. A. LEAVELL, Cashier.

AGUSTUS HOCKADAY, Ass't. Cashier.

DIRECTORS.

JOHN T. BROWN,

JOHN M. PRATT,

W. H. WILKERSON,

S. K. BLACK,

T. F. MURRY,

R. N. BAKER,

JAS. A. LEAVELL.

**Will Do A General Banking Business.
Deposits Solicited.**

Compkins & Robnett

High-Class
Dress Goods

Dry Goods Co.

and Ladies' Shoes.

The....

Fulton Weekly Journal.

Only Republican Newspaper
Published in Callaway Co.

*\$1 per year.
Try It.*

Bush's Big Cash Store

Is Noted for keeping Good Goods and for Selling at Low Prices. They have a splendid stock of Dry Goods, Boots and Shoes, Carpets, Rugs, Curtains, etc, etc.

Bush's Big Cash Store.

BELL BROS., BARBERS.

We have helped College enterprises for over 30 years, therefore we feel justified in asking for your trade.

Metropolitan Style of Hair Cutting, Clean Shaves and Shampooing. Hot and Cold Baths.

First Class Workmen Only.

GIVE US A CALL.

▷ Bury & Co. ◁



HEADQUARTERS FOR
Bicycles and Supplies,
Steel Ranges, Steam, Hot Air and Hot Water Heaters, Plumbing, Sheet Iron Work and Thresher's Supplies.

Stop and See **CHAS. E. SARTOR,**
THE SPOT CASH GROCER,

*Candy and Cigars.
A Friend of the Students.*

PATRONIZE THE
FULTON TELEPHONE CO.

They will do you right. Long Distance throughout Callaway and adjoining counties.

RESIDENCE 'PHONE \$1.00 A MONTH.

BEEN RUNNING SIXTY ODD YEARS.

TWICE EVERY WEEK EIGHT PAGES.

The Missouri Telegraph

“UNAWED BY POWER, UNCORRUPTED BY PATRONAGE”

WE DO GOOD JOB PRINTING, HURRIEDLY.

GIVES THE NEWS WHILE IT IS FRESH.



Two Cents for Collars,
Four Cents for Cuffs.

**Jackson
Laundry...**

Kansas City, Mo.

J. Will Thomas, Agent.
Fulton, Mo.

Office at Kruegel's Bakery.
Shipments Every Tuesday. Return
Friday. Agents Wanted
Throughout Mo.

Dr. S. S. Rowe,
DENTIST.

FULTON, - - - - - MISSOURI.

J. O. DIVERS...

*New and Fresh
Line of*

Groceries.

*In Old City Hall
East of Court House.*

Best Goods for Least Money.

STOP AT



Hotel Ringo.

MEXICO, MISSOURI.

— Esh & Norris, Proprietors.

CALL ON **WICKERSHAM,**
The South Side **BARBER,** *ood Workmen and Clean Towels.*
Baths, Hair Cuts, Shampooing and Shaves.

NEW YORK STORE.

OUTFITTER OF WOMANKIND.

READY-MADE WEAR OF EVERY DESCRIPTION. **SHOES AND MILLINERY,**
OUR BIG DEPARTMENTS.

Collett & Richmond....

DEALERS IN

**Groceries and
Queensware.....**



FINE LINE OF
**Summer Delicacies, Candies & Fruits.

STUDENTS, PATRONIZE

MOORE'S DRUG STORE.
They'll Treat You Right.

Palmer & Baker.... Pianos, Organs & Sheet Music, Wall Paper and Picture Frames, Artist's Material a Specialty. **Book and News Dealers.**

FULTON, MO
COPIES OF THE SEARCHLIGHT ON SALE, 35c.

DR. H. H. BRAGG,
DENTIST.

Fulton, - - Mo.

AMERICA'S MOST POPULAR RAILROAD
CHICAGO
 AND
ALTON
RAILROAD.
 PERFECT PASSENGER SERVICE TO

CHICAGO, ST. LOUIS,
 KANSAS CITY,
 PEORIA, DENVER.

AND POINTS IN

ILLINOIS,
 MISSOURI,

AND TERRITORY BEYOND.

W. L. PEARCE,
 PASSENGER AND TICKET AGENT.
 FULTON, MO.

GEO. J. CHARLTON
 GENERAL PASSENGER AND TICKET AGENT
 CHICAGO ILL.

W. C. HARRIS, PRESIDENT. E. W. GRANT, CASHIER.
 C. O. ATKINSON, VICE PRES. D. P. BARTLEY, ASS'T. CASHIER.
 E. A. J. KELLER, ACCOUNTANT.

...The Callaway Bank...

FULTON, MO.

Capital Stock, " " \$75,000.00.

All the Officers of this bank are old Westminister men. The accounts of patrons of the College are solicited.

R. H. NICHOLS, NICHOLS & DAVIS, PROPRIETORS. W. H. DAVIS

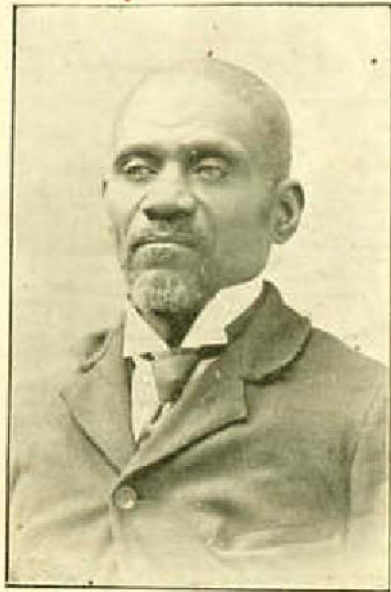
The Fulton Weekly Gazette.

ESTABLISHED 1877.

SUBSCRIPTION \$1.00 PER YEAR. H. I. NICHOLS, EDITOR & MANAGER.

Dr. W. H. RENOE,
 DENTIST.

Northwest Corner Main and Asylum Streets, Fulton, Mo.



JONATHAN EVANS,
Janitor.



SEE
THAT THIS
*Queen
Quality*
TRADE MARK
IS BRANDED
ON EVERY
SHOE.

O. D. JONES,
BOOTS AND SHOES.
"THAT'S ALL."

